

For Research Use Only

# IL-12/IL-23 p40 Recombinant antibody, PBS Only (Capture)

Catalog Number: 83008-5-PBS



## Basic Information

Catalog Number:

83008-5-PBS

Concentration:

1000 µg/ml

Source:

Rabbit

Isotype:

IgG

Immunogen Catalog Number:

EG0431

GenBank Accession Number:

BC067498

GeneID (NCBI):

3593

UNIPROT ID:

P29460

Full Name:

interleukin 12B (natural killer cell  
stimulatory factor 2, cytotoxic  
lymphocyte maturation factor 2, p40)

Calculated MW:

328 aa, 37 kDa

Purification Method:

Protein A purification

CloneNo.:

241600F8

## Applications

Tested Applications:

Sandwich ELISA, Indirect ELISA, Sample test

Species Specificity:

human

## Background Information

### Storage

Storage:

Store at -80°C.

The product is shipped with ice packs. Upon receipt, store it immediately at -80°C

Storage Buffer:

PBS only, pH7.3

For technical support and original validation data for this product please contact:

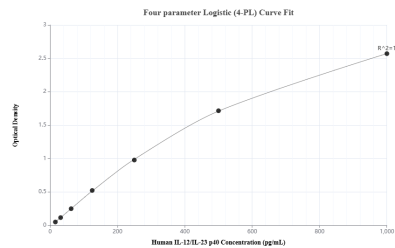
T: 4006900926

E: Proteintech-CN@ptglab.com

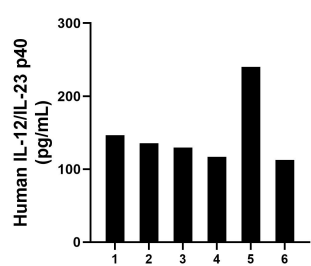
W: ptgcn.com

This product is exclusively available under Proteintech Group brand and is not available to purchase from any other manufacturer.

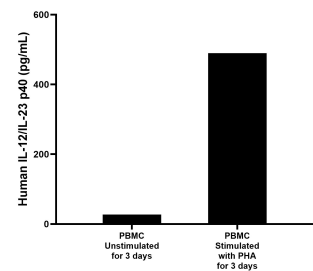
Selected Validation Data



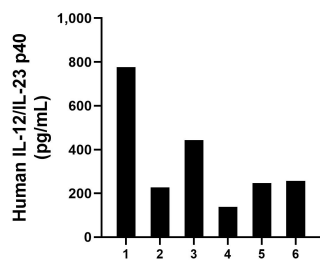
Sandwich ELISA standard curve of MP00035-4, Human IL-12/IL-23 p40 Recombinant Matched Antibody Pair - PBS only. 83008-5-PBS was coated to a plate as the capture antibody and incubated with serial dilutions of standard Eg0431. 83008-6-PBS was HRP conjugated as the detection antibody. Range: 15.6-1000 pg/mL



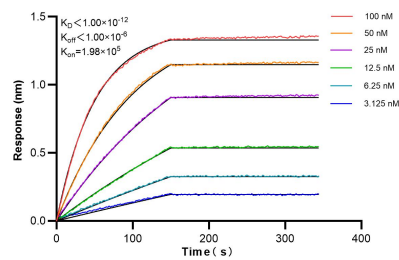
Plasma of six individual healthy human donors was measured. The human IL-12/IL-23 p40 concentration of detected samples was determined to be 146.9 pg/mL with a range of 112.74 - 240.1 pg/mL



Human peripheral blood mononuclear cells (PBMC) were cultured unstimulated or stimulated with 10  $\mu$ g/mL PHA for 3 days. The mean IL-12/IL-23 p40 concentration was determined to be 27.3 pg/mL in unstimulated PBMC supernatant, 489.4 pg/mL in PHA stimulated PBMC supernatant.



Serum of six individual healthy human donors was measured. The human IL-12/IL-23 p40 concentration of detected samples was determined to be 348.4 pg/mL with a range of 138.9 - 776.9 pg/mL



Biolayer interferometry (BLI) kinetic assays of 83008-5-RR against Human IL-12/IL-23 p40 were performed. The affinity constant is below 1 pM.