

LAMA2 Recombinant antibody

Catalog Number: 83007-2-RR

Basic Information

Catalog Number:

83007-2-RR

Size:

1000 µg/ml

Source:

Rabbit

Isotype:

IgG

Immunogen Catalog Number:

AG34494

GenBank Accession Number:

NM_000426

GeneID (NCBI):

3908

UNIPROT ID:

P24043

Full Name:

laminin, alpha 2

Calculated MW:

344 kDa

Observed MW:

344 kDa

Purification Method:

Protein A purification

CloneNo.:

230541D5

Recommended Dilutions:

WB 1:500-1:2000

Applications

Tested Applications:

WB, ELISA

Species Specificity:

human

Positive Controls:

WB : rat heart tissue,

Background Information

The laminin subunit alpha 2 (LAMA2) gene encodes an alpha 2 chain, which constitutes one of the subunits of laminin 2 (merosin) and laminin 4 (s-merosin). Basal laminae are structural components of the extracellular matrix that influence cell proliferation and differentiation, and laminin subunit alpha 2 (LAMA2) is the major component of the basal laminae- α subunit of laminin. (PMID: 30728939)

Storage

Storage:

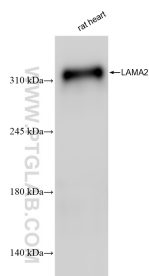
Store at -20°C. Stable for one year after shipment.

Storage Buffer:

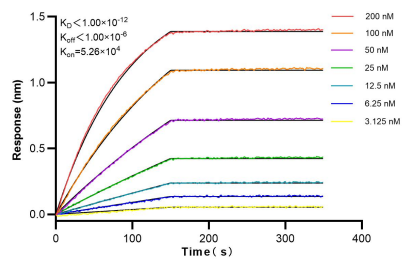
PBS with 0.02% sodium azide and 50% glycerol pH 7.3.

Aliquoting is unnecessary for -20°C storage

Selected Validation Data



Rat heart tissue were subjected to SDS PAGE followed by western blot with 83007-2-RR (LAMA2 antibody) at dilution of 1:1000 incubated at room temperature for 1.5 hours.



Biolayer interferometry (BLI) kinetic assays of 83007-2-RR against Human LAMA2 were performed. The affinity constant is below 1 pM.