

For Research Use Only

# MTAP Recombinant antibody, PBS Only (Capture)

Catalog Number: 83005-4-PBS



## Basic Information

Catalog Number: 83005-4-PBS	GenBank Accession Number: BC018625	Purification Method: Protein A purification
Size: 1mg/ml	GeneID (NCBI): 4507	CloneNo.: 240030E10
Source: Rabbit	UNIPROT ID: Q13126	
Isotype: IgG	Full Name: methylthioadenosine phosphorylase	
Immunogen Catalog Number: AG2051	Calculated MW: 283 aa, 31 kDa	

## Applications

**Tested Applications:**  
Cytometric bead array, Sandwich ELISA, Indirect ELISA,  
Sample test

**Species Specificity:**  
human

## Background Information

### Storage

**Storage:**  
Store at -80°C.  
**The product is shipped with ice packs. Upon receipt, store it immediately at -80°C**

**Storage Buffer:**  
100% PBS pH 7.3

For technical support and original validation data for this product please contact:

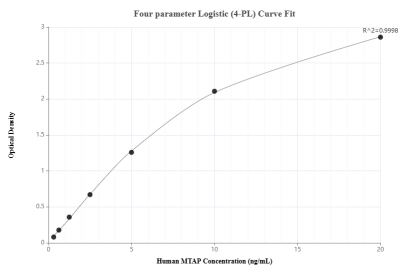
T: 4006900926

E: [Proteintech-CN@ptglab.com](mailto:Proteintech-CN@ptglab.com)

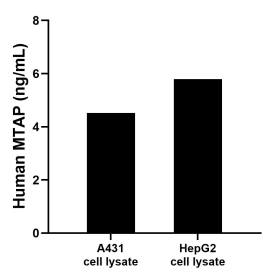
W: [ptgcn.com](http://ptgcn.com)

**This product is exclusively available under Proteintech Group brand and is not available to purchase from any other manufacturer.**

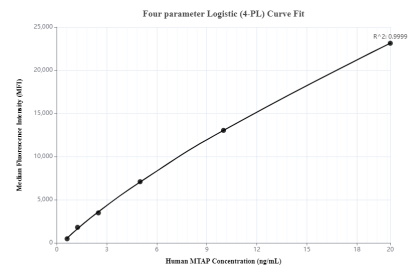
## Selected Validation Data



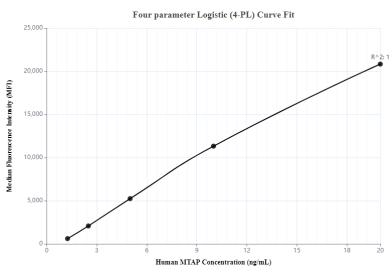
Sandwich ELISA standard curve of MP00050-2, Human MTAP Recombinant Matched Antibody Pair - PBS only. 83005-4-PBS was coated to a plate as the capture antibody and incubated with serial dilutions of standard Ag2051. 83005-3-PBS was HRP conjugated as the detection antibody. Range: 0.3125-20ng/mL



A431 and HepG2 cell lysate were measured. The human MTAP concentration of detected samples was determined to be 4.52 ng/mL (based on a 1.5 mg/mL extract load) in A431 cell lysate and 5.80 ng/mL (based on a 1.2 mg/mL extract load) in HepG2 cell lysate.



Cytometric bead array standard curve of MP00050-2, MTAP Recombinant Matched Antibody Pair, PBS Only. Capture antibody: 83005-4-PBS. Detection antibody: 83005-3-PBS. Standard: Ag2051. Range: 0.625-20 ng/mL



Cytometric bead array standard curve of MP00050-3, MTAP Recombinant Matched Antibody Pair, PBS Only. Capture antibody: 83005-4-PBS. Detection antibody: 83005-1-PBS. Standard: Ag2051. Range: 1.25-20 ng/mL