

For Research Use Only

# RILP Recombinant antibody, PBS Only (Capture)

Catalog Number: 82996-4-PBS

Featured Product



## Basic Information

Catalog Number:

82996-4-PBS

Size:

1mg/ml

Source:

Rabbit

Isotype:

IgG

Immunogen Catalog Number:

AG4472

GenBank Accession Number:

BC031621

GeneID (NCBI):

83547

UNIPROT ID:

Q96NA2

Full Name:

Rab interacting lysosomal protein

Calculated MW:

401 aa, 41 kDa

Observed MW:

50 kDa

Purification Method:

Protein A purification

CloneNo.:

230208G2

Affinity:

$K_D = 1.04 \times 10^{-11}$

$K_{off} = 2.33 \times 10^{-5}$

$K_{on} = 2.05 \times 10^6$

## Applications

Tested Applications:

WB, IHC, Cytometric bead array, Indirect ELISA

Species Specificity:

human

## Background Information

### Storage

Storage:

Store at -80°C.

The product is shipped with ice packs. Upon receipt, store it immediately at -80°C

Storage Buffer:

100% PBS pH 7.3

For technical support and original validation data for this product please contact:

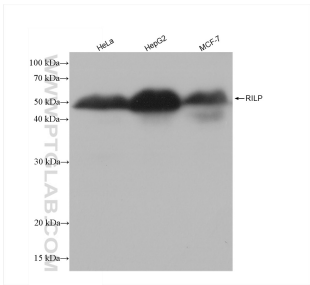
T: 4006900926

E: Proteintech-CN@ptglab.com

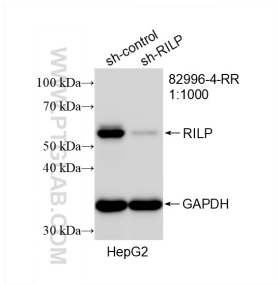
W: ptgcn.com

This product is exclusively available under Proteintech Group brand and is not available to purchase from any other manufacturer.

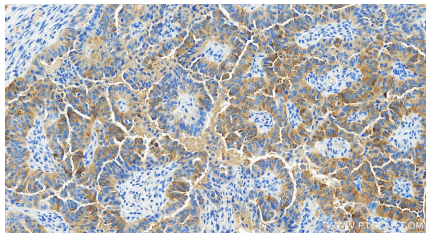
Selected Validation Data



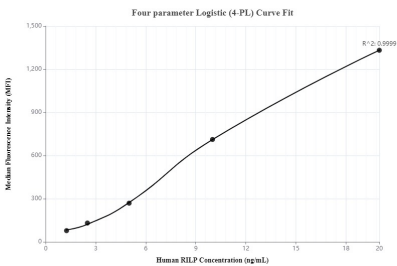
Various lysates were subjected to SDS PAGE followed by western blot with 82996-4-RR (RILP antibody) at dilution of 1:2000 incubated at room temperature for 1.5 hours. This data was developed using the same antibody clone with 82996-4-PBS in a different storage buffer formulation.



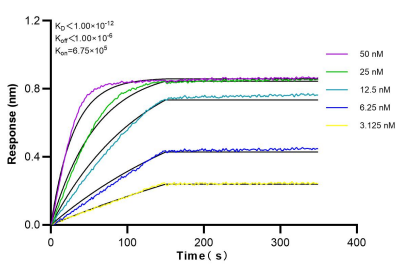
WB result of RILP antibody (82996-4-RR; 1:1000; incubated at room temperature for 1.5 hours) with sh-Control and sh-RILP transfected HepG2 cells. This data was developed using the same antibody clone with 82996-4-PBS in a different storage buffer formulation.



Immunohistochemical analysis of paraffin-embedded human ovarian cancer slide using 82996-4-RR (RILP antibody) at dilution of 1:500 (under 20x lens). Heat mediated antigen retrieval with Tris-EDTA buffer (pH 9.0). This data was developed using the same antibody clone with 82996-4-PBS in a different storage buffer formulation.



Cytometric bead array standard curve of MP00025-1, RILP Recombinant Matched Antibody Pair - PBS only. Capture antibody: 82996-4-PBS. Detection antibody: 82996-3-PBS. Standard: Ag4472. Range: 1.25-20 ng/mL.



Biolayer interferometry (BLI) kinetic assays of 82996-4-RR against Human IGFBP4 were performed. The affinity constant is below 1 pM.