

For Research Use Only

Endoglin/CD105 Recombinant antibody



Catalog Number: 82993-5-RR

Basic Information

Catalog Number:

82993-5-RR

Size:

1000 µg/ml

Source:

Rabbit

Isotype:

IgG

GenBank Accession Number:

BC014271

GeneID (NCBI):

2022

UNIPROT ID:

P17813

Full Name:

endoglin

Calculated MW:

71 kDa

Purification Method:

Protein A purification

CloneNo.:

230047E8

Recommended Dilutions:

IF/ICC 1:125-1:500

Applications

Tested Applications:

IF/ICC, ELISA

Species Specificity:

Human

Positive Controls:

IF/ICC : HUVEC cells,

Background Information

Endoglin (ENG, CD105) is a homodimeric cell membrane glycoprotein of 180 kDa, composed of disulphide-linked subunits of 95 kDa. Endoglin is a proliferation-associated and hypoxia-inducible protein mainly expressed on vascular endothelial cells. It acts as an accessory receptor for transforming growth factor beta (TGF-β) and is involved in vascular development and remodelling. The important role of Endoglin in angiogenesis and in tumor progression makes it an ideal target for antiangiogenic therapy and a good marker for tumor prognosis. (PMID: 1326540; 14528280; 21737653; 12773481)

Storage

Storage:

Store at -20°C. Stable for one year after shipment.

Storage Buffer:

PBS with 0.02% sodium azide and 50% glycerol pH 7.3.

Aliquoting is unnecessary for -20°C storage

For technical support and original validation data for this product please contact:

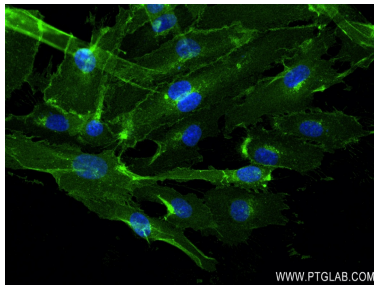
T: 4006900926

E: Proteintech-CN@ptglab.com

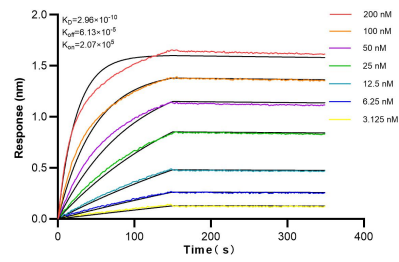
W: ptgcn.com

This product is exclusively available under Proteintech Group brand and is not available to purchase from any other manufacturer.

Selected Validation Data



Immunofluorescent analysis of (4% PFA) fixed HUVEC cells using ENG antibody (82993-5-RR, Clone: 230047E8) at dilution of 1:250 and CoraLite®488-Conjugated AffiniPure Goat Anti-Mouse IgG(H+L) (SA00013-1).



Biolayer interferometry (BLI) kinetic assays of 82993-5-RR against Human Endoglin/CD105 were performed. The affinity constant is 0.296 nM.