

For Research Use Only

LAMP5 Recombinant antibody, PBS Only (Detector)

Catalog Number: 82992-2-PBS



Basic Information

Catalog Number: 82992-2-PBS	GenBank Accession Number: BC050727	Purification Method: Protein A purification
Size: 1mg/ml	GeneID (NCBI): 24141	CloneNo.: 230102F12
Source: Rabbit	UNIPROT ID: Q9UJQ1	
Isotype: IgG	Full Name: chromosome 20 open reading frame 103	
Immunogen Catalog Number: AG33894	Observed MW: 31-35 kDa	

Applications

Tested Applications:
WB, IF/ICC, FC (Intra), Cytometric bead array, Indirect
ELISA

Species Specificity:
human, mouse

Background Information

LAMP5 (Lysosome-associated membrane glycoprotein 5) is also named as BAD-LAMP and C20orf103. BAD-LAMP is a novel biomarker of nonactivated human plasmacytoid dendritic cells (PMID: 21642595). LAMP5 may be one of the key genes in the development of Multiple myeloma (MM) as well as its recurrence (PMID: 37033323). LAMP5 is a mammalian ortholog of the Caenorhabditis elegans protein, UNC-46, which functions as a sorting factor to localize the vesicular GABA transporter UNC-47 to synaptic vesicles (PMID: 30867010). It was localized exclusively in inhibitory synaptic terminals (PMID: 30867010).

Storage

Storage:
Store at -80°C.
The product is shipped with ice packs. Upon receipt, store it immediately at -80°C

Storage Buffer:
100% PBS pH 7.3

For technical support and original validation data for this product please contact:

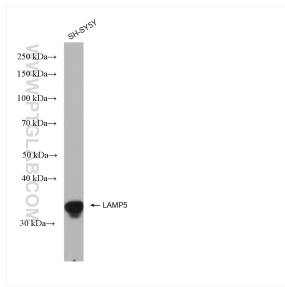
T: 4006900926

E: Proteintech-CN@ptglab.com

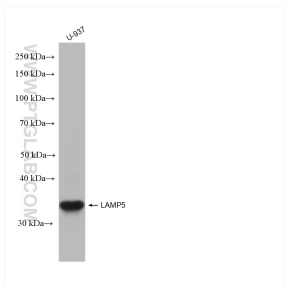
W: ptgcn.com

This product is exclusively available under Proteintech Group brand and is not available to purchase from any other manufacturer.

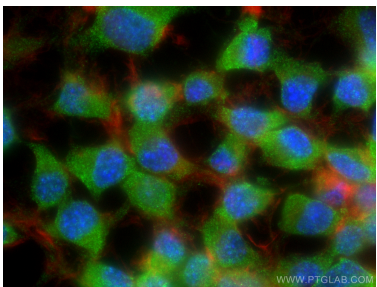
Selected Validation Data



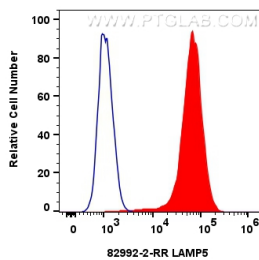
Various lysates were subjected to SDS PAGE followed by western blot with 82992-2-RR (LAMP5 antibody) at dilution of 1:10000 incubated at room temperature for 1.5 hours. This data was developed using the same antibody clone with 82992-2-PBS in a different storage buffer formulation.



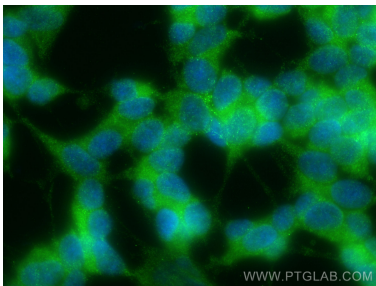
Various lysates were subjected to SDS PAGE followed by western blot with 82992-2-RR (LAMP5 antibody) at dilution of 1:10000 incubated at room temperature for 1.5 hours. This data was developed using the same antibody clone with 82992-2-PBS in a different storage buffer formulation.



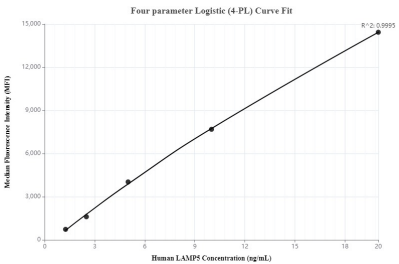
Immunofluorescent analysis of (4% PFA) fixed Neuro-2a cells using LAMP5 antibody (82992-2-RR, Clone: 230102F12) at dilution of 1:1000 and CoraLite®488-Conjugated AffiniPure Goat Anti-Rabbit IgG(H+L) (SA00013-2), CL594-Phalloidin (red). This data was developed using the same antibody clone with 82992-2-PBS in a different storage buffer formulation.



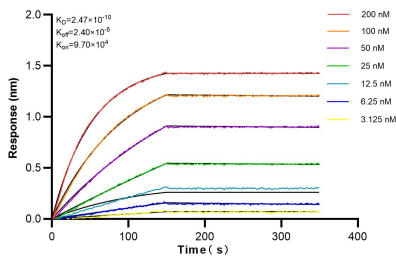
1x10⁶ SH-SY5Y cells were intracellularly stained with 0.25 ug LAMP5 Recombinant antibody (82992-2-RR, Clone:230102F12) and CoraLite®488-Conjugated Goat Anti-Rabbit IgG(H+L) (SA00013-2) (red). Cells were fixed with 4% PFA and permeabilized with Flow Cytometry Perm Buffer (PF00011-C). This data was developed using the same antibody clone with 82992-2-PBS in a different storage buffer formulation.



Immunofluorescent analysis of (-20°C Ethanol) fixed SH-SY5Y cells using LAMP5 antibody (82992-2-RR, Clone: 230102F12) at dilution of 1:500 and CoraLite®488-Conjugated Goat Anti-Rabbit IgG(H+L) (SA00013-2). This data was developed using the same antibody clone with 82992-2-PBS in a different storage buffer formulation.



Cytometric bead array standard curve of MP00069-3, LAMP5 Recombinant Matched Antibody Pair, PBS Only. Capture antibody: 82992-4-PBS. Detection antibody: 82992-2-PBS. Standard: Ag33894. Range: 1.25-20 ng/mL.



Biolayer interferometry (BLI) kinetic assays of 82992-2-RR against Human LAMP5 were performed. The affinity constant is 0.247 nM.