

For Research Use Only

# MMP3 Recombinant antibody, PBS Only (Detector)



Catalog Number: 82984-2-PBS

## Basic Information

Catalog Number:

82984-2-PBS

Size:

1mg/ml

Source:

Rabbit

Isotype:

IgG

GenBank Accession Number:

BC074815

GeneID (NCBI):

4314

UNIPROT ID:

P08254

Full Name:

matrix metalloproteinase 3  
(stromelysin 1, progelatinase)

Purification Method:

Protein A purification

CloneNo.:

230535B6

## Applications

Tested Applications:

Cytometric bead array, Sandwich ELISA, Indirect ELISA,  
Sample test

Species Specificity:

human

## Background Information

### Storage

Storage:

Store at -80°C.

**The product is shipped with ice packs. Upon receipt, store it immediately at -80°C**

Storage Buffer:

100% PBS pH 7.3

For technical support and original validation data for this product please contact:

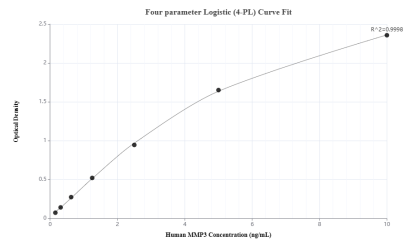
T: 4006900926

E: [Proteintech-CN@ptglab.com](mailto:Proteintech-CN@ptglab.com)

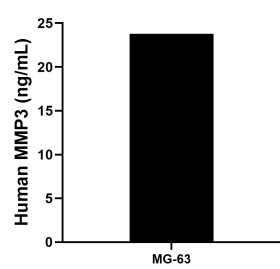
W: [ptgcn.com](http://ptgcn.com)

**This product is exclusively available under Proteintech Group brand and is not available to purchase from any other manufacturer.**

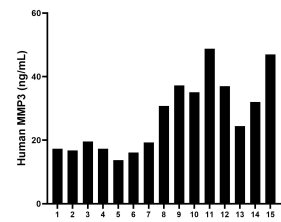
# Selected Validation Data



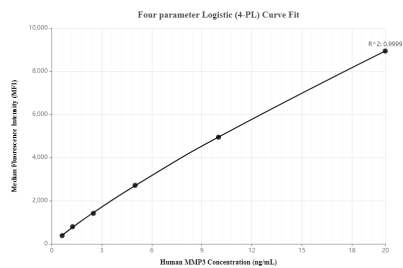
Sandwich ELISA standard curve of MP00083-2, Human MMP3 Recombinant Matched Antibody Pair - PBS only. 82984-3-PBS was coated to a plate as the capture antibody and incubated with serial dilutions of standard:Eg0382.82984-2-PBS was HRP conjugated as the detection antibody. Range: 0.156-10 ng/mL.



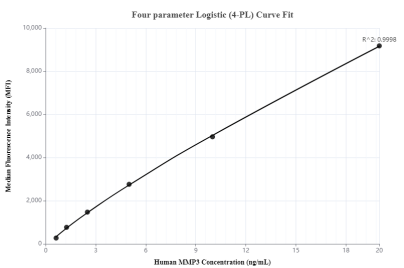
MG-63 were cultured in DMEM supplemented with 10% fetal bovine serum, 2.5 mM L-glutamine, 100 U/mL penicillin, and 100 µg/mL streptomycin sulfate. An aliquot of the cell culture supernate was removed, assayed for human MMP3, and measured 23.78 ng/mL.



Serum of fifteen individual healthy human donors was measured. The human MMP3 concentration of detected samples was determined to be 27.50 ng/mL with a range of 13.74 - 48.76 ng/mL.



Cytometric bead array standard curve ofMP00083-1, MMP3 Recombinant Matched Antibody Pair, PBS Only. Capture antibody: 82984-1-PBS. Detection antibody: 82984-2-PBS. Standard: Eg0382. Range: 0.625-20 ng/mL.



Cytometric bead array standard curve ofMP00083-2, MMP3 Recombinant Matched Antibody Pair, PBS Only. Capture antibody: 82984-3-PBS. Detection antibody: 82984-2-PBS. Standard: Eg0382. Range: 0.625-20 ng/mL.