

For Research Use Only

# TMEM132E Recombinant antibody, PBS Only (Detector)

Catalog Number: 82983-2-PBS



## Basic Information

Catalog Number:	82983-2-PBS	GenBank Accession Number:	NM_001304438	Purification Method:	Protein A purification
Size:	1mg/ml	GeneID (NCBI):	124842	CloneNo.:	230525E12
Source:	Rabbit	UNIPROT ID:	Q6IEE7		
Isotype:	IgG	Full Name:	transmembrane protein 132E		
Immunogen Catalog Number:	AG26772	Calculated MW:	116 kDa		
		Observed MW:	100-110 kDa		

## Applications

**Tested Applications:**  
WB, Cytometric bead array, Indirect ELISA

**Species Specificity:**  
human, mouse

## Background Information

Transmembrane protein 132E (TMEM132E) is a member of the TMEM132 family which also include TMEM132A, TMEM132B, TMEM132C, TMEM132D (PMID: 29088312). The gene of TMEM132E is located within the DFNB99 locus on chromosome 17q12 and is highly expressed in the inner ear and other tissues including brain, kidney, lung, liver, spleen, heart, small intestine, colon, thymus, and stomach (PMID: 31656313). A variant of TMEM132E has been associated with autosomal-recessive nonsyndromic hearing loss DFNB99 (PMID: 25331638).

## Storage

**Storage:**  
Store at -80°C.

**The product is shipped with ice packs. Upon receipt, store it immediately at -80°C**

**Storage Buffer:**  
100% PBS pH 7.3

For technical support and original validation data for this product please contact:

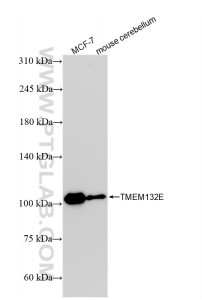
T: 4006900926

E: [Proteintech-CN@ptglab.com](mailto:Proteintech-CN@ptglab.com)

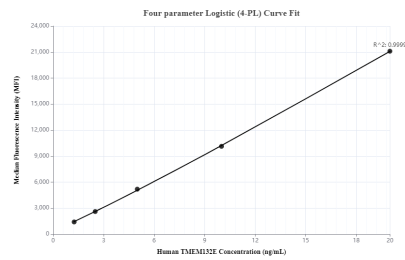
W: [ptgcn.com](http://ptgcn.com)

**This product is exclusively available under Proteintech Group brand and is not available to purchase from any other manufacturer.**

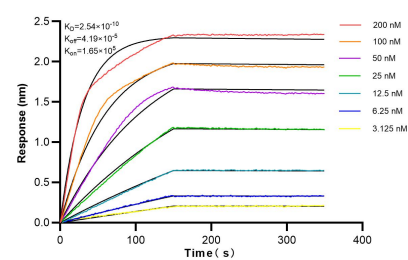
## Selected Validation Data



Various lysates were subjected to SDS PAGE followed by western blot with 82983-2-RR (TMEM132E antibody) at dilution of 1:2000 incubated at room temperature for 1.5 hours. This data was developed using the same antibody clone with 82983-2-PBS in a different storage buffer formulation.



Cytometric bead array standard curve of MP00054-2, TMEM132E Recombinant Matched Antibody Pair, PBS Only. Capture antibody: 82983-1-PBS. Detection antibody: 82983-2-PBS. Standard: Ag26772. Range: 1.25-20 ng/mL



Biolayer interferometry (BLI) kinetic assays of 82983-2-RR against Human TMEM132E were performed. The affinity constant is 0.254 nM.