

For Research Use Only

# AFP Recombinant antibody

Catalog Number: 82982-6-RR



## Basic Information

Catalog Number: 82982-6-RR	GenBank Accession Number: BC027881	Purification Method: Protein A purification
Size: 1000 ug/ml	GeneID (NCBI): 174	CloneNo.: 230435E3
Source: Rabbit	UNIPROT ID: P02771	Recommended Dilutions: WB 1:5000-1:50000 IHC 1:300-1:1200
Isotype: IgG	Full Name: alpha-fetoprotein	
	Calculated MW: 69 kDa	
	Observed MW: 68 kDa	

## Applications

Tested Applications: WB, IHC, ELISA	Positive Controls:
Species Specificity: human	WB : human placenta tissue, IHC : human liver tissue,
<b>Note-IHC: suggested antigen retrieval with TE buffer pH 9.0; (*) Alternatively, antigen retrieval may be performed with citrate buffer pH 6.0</b>	

## Background Information

AFP (Alpha-fetoprotein) is a major plasma protein in the fetus and its concentration is very low in the adult (PMID:24120489). AFP can be detected at abnormally high concentrations in hepatocellular carcinomas as well as in the plasma and ascitic fluid of adults with hepatoma, indicating that AFP can serve as a tumor marker (PMID: 18669658). AFP is also a glycosylated protein and based on its binding capability to lectin Lens Culinaris Agglutinin (LCA), and total AFP can be separated into three different glycoforms, AFP-L1, AFP-L2, and AFP-L3. Core-fucosylated form of AFP (AFP-L3) is a more specific indicator than total AFP for HCC (PMID: 33128033, 35458505)

## Storage

**Storage:**  
Store at -20°C. Stable for one year after shipment.  
**Storage Buffer:**  
PBS with 0.02% sodium azide and 50% glycerol pH 7.3.  
Aliquoting is unnecessary for -20°C storage

For technical support and original validation data for this product please contact:

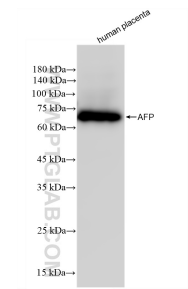
T: 4006900926

E: Proteintech-CN@ptglab.com

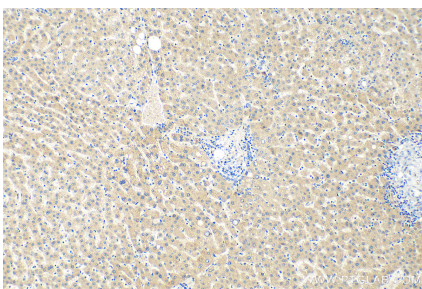
W: ptgcn.com

This product is exclusively available under Proteintech Group brand and is not available to purchase from any other manufacturer.

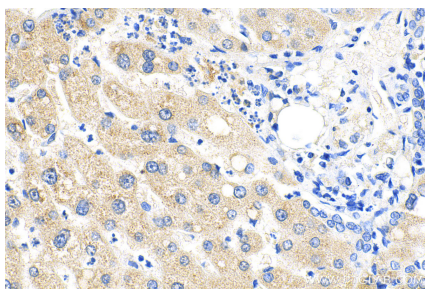
Selected Validation Data



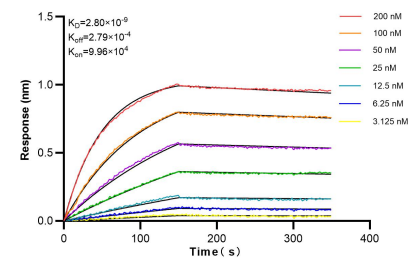
human placenta tissue were subjected to SDS PAGE followed by western blot with 82982-6-RR (AFP antibody) at dilution of 1:10000 incubated at room temperature for 1.5 hours.



Immunohistochemical analysis of paraffin-embedded human liver tissue slide using 82982-6-RR (AFP antibody) at dilution of 1:600 (under 10x lens). Heat mediated antigen retrieval with Tris-EDTA buffer (pH 9.0).



Immunohistochemical analysis of paraffin-embedded human liver tissue slide using 82982-6-RR (AFP antibody) at dilution of 1:600 (under 40x lens). Heat mediated antigen retrieval with Tris-EDTA buffer (pH 9.0).



Biolayer interferometry (BLI) kinetic assays of 82982-6-RR against Human AFP were performed. The affinity constant is 2.80 nM.