

For Research Use Only

BBS4 Recombinant antibody

Catalog Number: 82961-1-RR

Featured Product



Basic Information

Catalog Number: 82961-1-RR	GenBank Accession Number: BC027624	Purification Method: Protein A purification
Size: 1000 ug/ml	GeneID (NCBI): 585	CloneNo.: 230303C2
Source: Rabbit	UNIPROT ID: Q96RK4	Recommended Dilutions: WB 1:2000-1:10000 IF/ICC 1:500-1:2000
Isotype: IgG	Full Name: Bardet-Biedl syndrome 4	
Immunogen Catalog Number: AG3430	Calculated MW: 519 aa, 58 kDa	
	Observed MW: 60 kDa	

Applications

Tested Applications: WB, IF/ICC, FC (Intra), ELISA	Positive Controls: WB : HEK-293 cells, HeLa cells, SH-SY5Y cells
Species Specificity: human	IF/ICC : hTERT-RPE1 cells,

Background Information

BBS4 (Bardet-Biedl syndrome protein 4) is one of the early BBS proteins discovered, with 35 mutations reported to cause the BBS phenotype (PMID: 26762677). BBS4 undergoes localization to the centriolar satellites of centrosomes and basal body of primary cilia, where it takes part in recruiting cargo to centriolar satellites and allowing the formation of a functional centrosomal microtubule organizing center (MTOC) (PMID: 25860617). Some research has found that BBS4 expression in humans during the development of CNS and sensory organs, concerning the cardinal clinical signs of BBS (PMID: 33860840).

Storage

Storage:
Store at -20°C. Stable for one year after shipment.
Storage Buffer:
PBS with 0.02% sodium azide and 50% glycerol pH 7.3.
Aliquoting is unnecessary for -20°C storage

For technical support and original validation data for this product please contact:

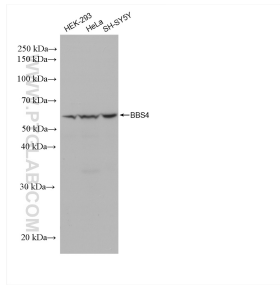
T: 4006900926

E: Proteintech-CN@ptglab.com

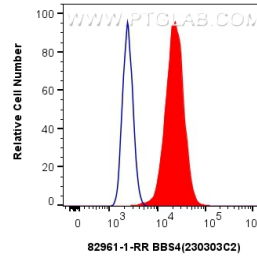
W: ptgcn.com

This product is exclusively available under Proteintech Group brand and is not available to purchase from any other manufacturer.

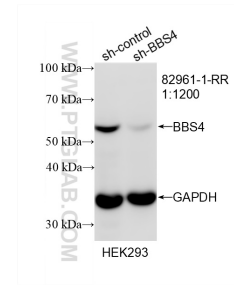
Selected Validation Data



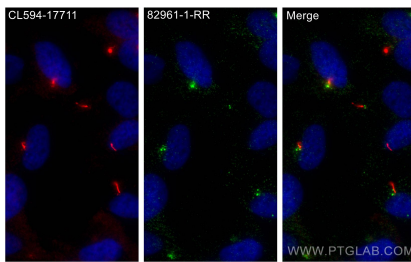
Various lysates were subjected to SDS PAGE followed by western blot with 82961-1-RR (BBS4 antibody) at dilution of 1:5000 incubated at room temperature for 1.5 hours.



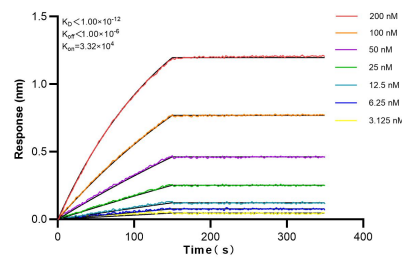
1×10^6 HeLa cells were intracellularly stained with 0.25 μ g BBS4 Recombinant antibody (82961-1-RR, Clone:230303C2) and CoraLite[®]488-Conjugated AffiniPure Goat Anti-Rabbit IgG(H+L) (SA00013-2) (red), or 0.25 μ g Isotype Control (blue). Cells were fixed with 4% PFA and permeabilized with Flow Cytometry Perm Buffer (PF00011-C).



WB result of BBS4 antibody (82961-1-RR; 1:1200; incubated at room temperature for 1.5 hours) with sh-Control and sh-BBS4 transfected HEK-293 cells.



Immunofluorescent analysis of (4% PFA) fixed hTERT-RPE1 cells using BBS4 antibody (82961-1-RR, Clone: 230303C2) at dilution of 1:1000 and CoraLite[®]488-Conjugated AffiniPure Goat Anti-Rabbit IgG(H+L) (SA00013-2), CoraLite[®]594 ARL13B antibody (CL594-17711, red).



Biolayer interferometry (BLI) kinetic assays of 82961-1-RR against Human BBS4 were performed. The affinity constant is below 1 pM.