

For Research Use Only

MAX Recombinant antibody, PBS Only (Detector)

Catalog Number: 82958-3-PBS



Basic Information

| | | | | | |
|---------------------------|-------------|---------------------------|-------------------------|----------------------|---------------------------------|
| Catalog Number: | 82958-3-PBS | GenBank Accession Number: | BC003525 | Purification Method: | Protein A purification |
| Size: | 1mg/ml | GeneID (NCBI): | 4149 | CloneNo.: | 230215C6 |
| Source: | Rabbit | UNIPROT ID: | P61244 | Affinity: | $K_D = 2.32 \times 10^{-10}$ |
| Isotype: | IgG | Full Name: | MYC associated factor X | | $K_{off} = 8.10 \times 10^{-5}$ |
| Immunogen Catalog Number: | AG0680 | Calculated MW: | 18 kDa | | $K_{on} = 3.49 \times 10^5$ |

Applications

Tested Applications:
Cytometric bead array, Sandwich ELISA, Indirect ELISA, Sample test

Species Specificity:
human

Background Information

Storage

Storage:
Store at -80°C.
The product is shipped with ice packs. Upon receipt, store it immediately at -80°C

Storage Buffer:
100% PBS pH 7.3

For technical support and original validation data for this product please contact:

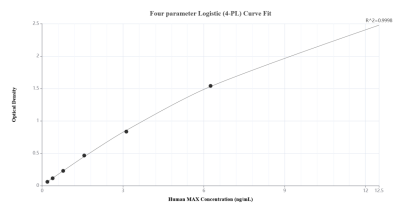
T: 4006900926

E: Proteintech-CN@ptglab.com

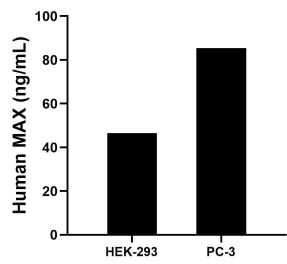
W: ptgcn.com

This product is exclusively available under Proteintech Group brand and is not available to purchase from any other manufacturer.

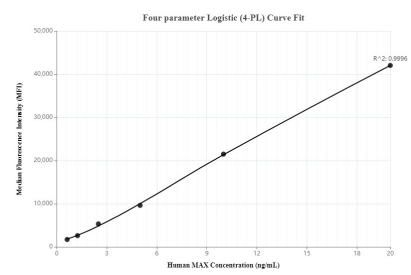
Selected Validation Data



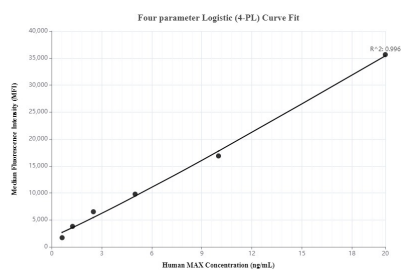
Sandwich ELISA standard curve of MP00126-3, Human MAX Recombinant Matched Antibody Pair - PBS only. 82958-5-PBS was coated to a plate as the capture antibody and incubated with serial dilutions of standard Ag0680. 82958-3-PBS was HRP conjugated as the detection antibody. Range: 0.195-12.5 ng/mL.



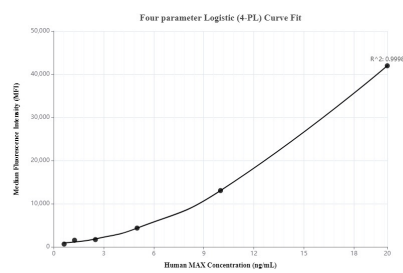
The mean MAX concentration was determined to be 46.56 ng/mL in HEK-293 cell extract based on a 1.50 mg/mL extract load and 85.43 ng/mL in PC-3 cell extract based on a 1.30 mg/mL extract load.



Cytometric bead array standard curve of MP00126-1, MAX Recombinant Matched Antibody Pair - PBS only. Capture antibody: 82958-2-PBS. Detection antibody: 82958-3-PBS. Standard: Ag0680. Range: 0.625-20 ng/mL.



Cytometric bead array standard curve of MP00126-2, MAX Recombinant Matched Antibody Pair - PBS only. Capture antibody: 82958-4-PBS. Detection antibody: 82958-3-PBS. Standard: Ag0680. Range: 0.625-20 ng/mL.



Cytometric bead array standard curve of MP00126-3, MAX Recombinant Matched Antibody Pair - PBS only. Capture antibody: 82958-5-PBS. Detection antibody: 82958-3-PBS. Standard: Ag0680. Range: 0.625-20 ng/mL.