

For Research Use Only

Mouse DFNA5/GSDME Recombinant monoclonal antibody, PBS Only (Detector)

Catalog Number: 82955-2-PBS



Basic Information

Catalog Number: 82955-2-PBS	GenBank Accession Number: BC132303	Purification Method: Protein A purification
Concentration: 1000 µg/ml	GeneID (NCBI): 54722	CloneNo.: 251415B1
Source: Rabbit	UNIPROT ID: Q9Z2D3	
Isotype: IgG	Full Name: deafness, autosomal dominant 5 (human)	
Immunogen Catalog Number: AG33622	Calculated MW: 57 kDa	
	Observed MW: 57 kDa	

Applications

Tested Applications:
WB, Sandwich ELISA, Indirect ELISA

Species Specificity:
mouse, rat

Background Information

DFNA5 (deafness, autosomal dominant 5), also known as GSDME or ICERE-1, is a 496 amino acid protein that is expressed in cochlea tissue, as well as in placenta, brain, heart, liver, lung and pancreas. Defects in the gene encoding DFNA5 are the cause of non-syndromic sensorineural deafness autosomal dominant type 5 (DFNA5), a form of sensorineural hearing loss that results from damage to one of various structures that receive sound information in the brain.

Storage

Storage:
Store at -80°C.
The product is shipped with ice packs. Upon receipt, store it immediately at -80°C

Storage Buffer:
PBS only, pH7.3

For technical support and original validation data for this product please contact:

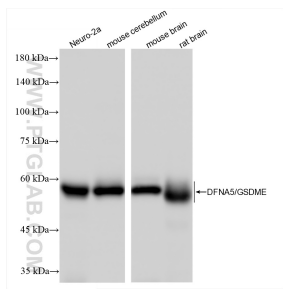
T: 4006900926

E: Proteintech-CN@ptglab.com

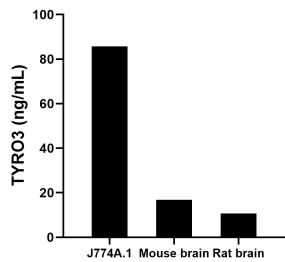
W: ptgcn.com

This product is exclusively available under Proteintech Group brand and is not available to purchase from any other manufacturer.

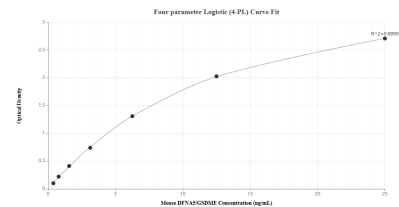
Selected Validation Data



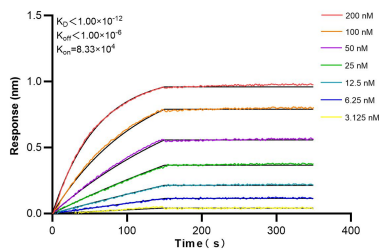
Various lysates were subjected to SDS PAGE followed by western blot with 82955-2-RR (Dfna5 antibody) at dilution of 1:10000 incubated at room temperature for 1.5 hours. This data was developed using the same antibody clone with 82955-2-PBS in a different storage buffer formulation.



The mean DFNA5/GSDME concentration was determined to be 85.78 ng/mL in J744A.1 cell extract based on a 1.3 mg/mL extract load, 16.86 ng/mL in mouse brain tissue extract based on a 7.0 mg/mL extract load and 10.69 ng/mL in rat brain tissue extract based on a 8.2 mg/mL extract load.



Sandwich ELISA standard curve of MP02686-1, Mouse DFNA5/GSDME Recombinant Matched Antibody Pair - PBS only. 82955-3-PBS was coated to a plate as the capture antibody and incubated with serial dilutions of standard Ag33622. 82955-2-PBS was HRP conjugated as the detection antibody. Range: 0.391-25 ng/mL



Biolayer interferometry (BLI) kinetic assays of 82955-2-RR against Mouse DFNA5/GSDME were performed. The affinity constant is below 1 pM.