

For Research Use Only

Claudin 16 Recombinant monoclonal antibody

Catalog Number: 82954-2-RR



Basic Information

Catalog Number:

82954-2-RR

Source:

Rabbit

Isotype:

IgG

GenBank Accession Number:

BC069682

GeneID (NCBI):

10686

UNIPROT ID:

Q9Y5I7

Full Name:

claudin 16

Calculated MW:

305 aa, 34 kDa

Observed MW:

34 kDa

Purification Method:

Protein A purification

CloneNo.:

251611H8

Recommended Dilutions:

WB: 1:500-1:2000

Applications

Tested Applications:

WB, ELISA

Species Specificity:

human

Positive Controls:

WB : HEK-293 cells, ACHN cells, HepG2 cells

Background Information

Claudins are a family of proteins that are the most important components of the tight junctions, where they establish the paracellular barrier that controls the flow of molecules in the intercellular space between the cells of an epithelium. They have similar structures with four transmembrane domains, with the N-terminus and the C-terminus in the cytoplasm. Claudin-16 is primarily found in the kidneys and is responsible for regulating the reabsorption of magnesium and calcium ions. Mutations in the Claudin-16 gene can lead to a rare genetic disorder called familial hypomagnesemia with hypercalciuria and nephrocalcinosis (FHHNC).

Storage

Storage:

Store at -20°C. Stable for one year after shipment.

Storage Buffer:

PBS with 0.02% sodium azide and 50% glycerol, pH7.3

Aliquoting is unnecessary for -20°C storage

For technical support and original validation data for this product please contact:

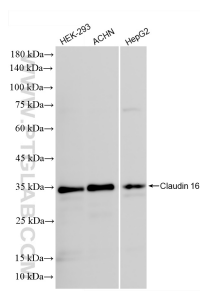
T: 4006900926

E: Proteintech-CN@ptglab.com

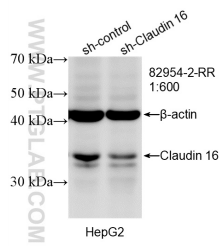
W: ptgcn.com

This product is exclusively available under Proteintech Group brand and is not available to purchase from any other manufacturer.

Selected Validation Data



Various lysates were subjected to SDS PAGE followed by western blot with 82954-2-RR (Claudin 16 antibody) at dilution of 1:1000 incubated at room temperature for 1.5 hours.



WB result of Claudin 16 antibody (82954-2-RR; 1:600; incubated at room temperature for 1.5 hours) with sh-Control and sh-Claudin 16 transfected HepG2 cells.