

# EFNA2 Recombinant antibody

Catalog Number: 82951-1-RR

## Basic Information

**Catalog Number:**

82951-1-RR

**Size:**

1000 µg/ml

**Source:**

Rabbit

**Isotype:**

IgG

**GenBank Accession Number:**

NM\_001405

**GeneID (NCBI):**

1943

**UNIPROT ID:**

O43921

**Full Name:**

ephrin-A2

**Calculated MW:**

213 aa, 24 kDa

**Purification Method:**

Protein A purification

**CloneNo.:**

230251D8

**Recommended Dilutions:**

IF/ICC 1:50-1:500

## Applications

**Tested Applications:**

IF/ICC, ELISA

**Species Specificity:**

Human

**Positive Controls:**

IF/ICC : COLO 205 cells,

## Background Information

Ephrin A2, also known as ELF1, Cek7L, and LERK6, is a member of the ephrin ligand family, which binds members of the Eph receptor family. The Eph family members are involved in central nervous system function and in development. The predicted 213-amino acid EFNA2 protein is composed of a signal sequence, a receptor-binding region, a spacer region, and a hydrophobic region. EFNA2 binds to the receptor tyrosine kinases EPHA3, EPHA4 and EPHA5.

## Storage

**Storage:**

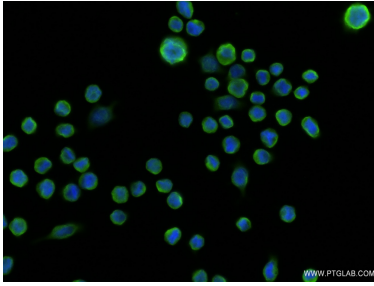
Store at -20°C. Stable for one year after shipment.

**Storage Buffer:**

PBS with 0.02% sodium azide and 50% glycerol pH 7.3.

Aliquoting is unnecessary for -20°C storage

## Selected Validation Data



Immunofluorescent analysis of (4% PFA) fixed COLO 205 cells using EFNA2 antibody (82951-1-RR, Clone: 230251D8 ) at dilution of 1:200 and CoraLite®488-Conjugated AffiniPure Goat Anti-Rabbit IgG(H+L) (SA00013-2).