

For Research Use Only

GPX4 Recombinant antibody, PBS Only (Detector)

Catalog Number: 82949-1-PBS



Basic Information

Catalog Number:	GenBank Accession Number:	Purification Method:
82949-1-PBS	BC022071	Protein A purification
Concentration:	GeneID (NCBI):	CloneNo.:
1mg/ml	2879	230168A8
Source:	UNIPROT ID:	
Rabbit	P36969	
Isotype:	Full Name:	
IgG	glutathione peroxidase 4 (phospholipid hydroperoxidase)	
Immunogen Catalog Number:	Calculated MW:	
AG5809	22 kDa	

Applications

Tested Applications:
IHC, IF/ICC, FC (Intra), Cytometric bead array, Sandwich ELISA, Indirect ELISA, Sample test

Species Specificity:
human, mouse

Background Information

GPX4 (Phospholipid hydroperoxide glutathione peroxidase, mitochondrial) protects cells against membrane lipid peroxidation and cell death. Required for normal sperm development and male fertility. It has two isoforms about 20KDa and 22KDa, respectively. GPX4 is a monomer, but it has a tendency to form higher mass oligomers (PMID:17630701). It presents primarily in testis.

Storage

Storage:
Store at -80°C.
The product is shipped with ice packs. Upon receipt, store it immediately at -80°C
Storage Buffer:
100% PBS pH 7.3

For technical support and original validation data for this product please contact:

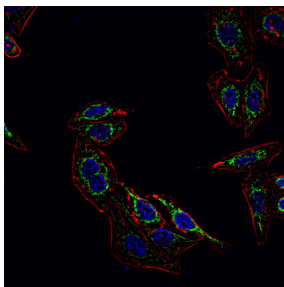
T: 4006900926

E: Proteintech-CN@ptglab.com

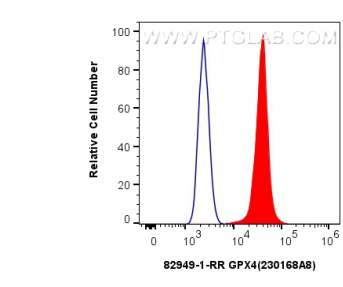
W: ptgcn.com

This product is exclusively available under Proteintech Group brand and is not available to purchase from any other manufacturer.

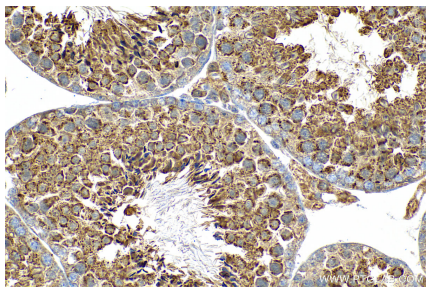
Selected Validation Data



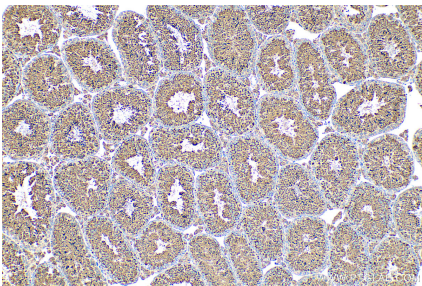
Immunofluorescent analysis of (4% PFA) fixed HepG2 cells using GPX4 antibody (82949-1-RR, Clone: 230168A8) at dilution of 1:300 and CoraLite®488-Conjugated AffiniPure Goat Anti-Rabbit IgG(H+L) (SA00013-2). This data was developed using the same antibody clone with 82949-1-PBS in a different storage buffer formulation.



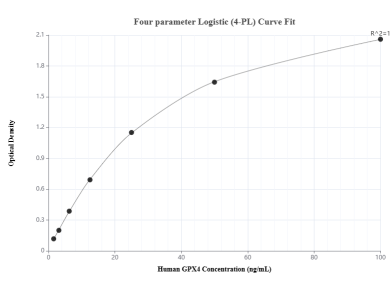
1x10⁶ HeLa cells were intracellularly stained with 0.25 ug GPX4 Recombinant antibody (82949-1-RR, Clone:230168A8) and CoraLite®488-Conjugated AffiniPure Goat Anti-Rabbit IgG(H+L) (SA00013-2) (red), or 0.25 ug Isotype Control (blue). Cells were fixed with 4% PFA and permeabilized with Flow Cytometry Perm Buffer (PF00011-C). This data was developed using the same antibody clone with 82949-1-PBS in a different storage buffer formulation.



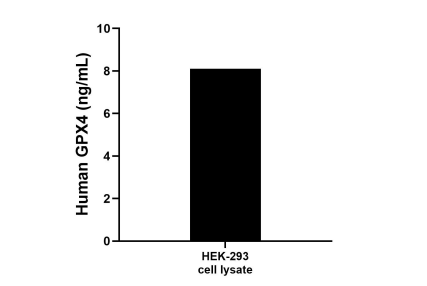
Immunohistochemical analysis of paraffin-embedded mouse testis tissue slide using 82949-1-RR (GPX4 antibody) at dilution of 1:200 (under 40x lens). Heat mediated antigen retrieval with Tris-EDTA buffer (pH 9.0). This data was developed using the same antibody clone with 82949-1-PBS in a different storage buffer formulation.



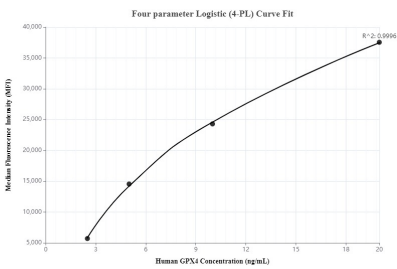
Immunohistochemical analysis of paraffin-embedded mouse testis tissue slide using 82949-1-RR (GPX4 antibody) at dilution of 1:200 (under 10x lens). Heat mediated antigen retrieval with Tris-EDTA buffer (pH 9.0). This data was developed using the same antibody clone with 82949-1-PBS in a different storage buffer formulation.



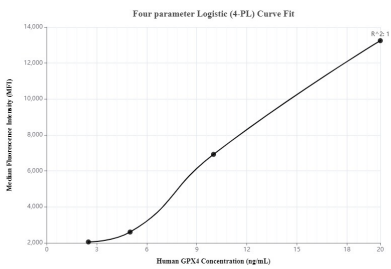
Sandwich ELISA standard curve of MP00049-3, Human GPX4 Recombinant Matched Antibody Pair - PBS only. 82949-4-PBS was coated to a plate as the capture antibody and incubated with serial dilutions of standard Ag5809. 82949-1-PBS was HRP conjugated as the detection antibody. Range: 1.56-100 ng/mL



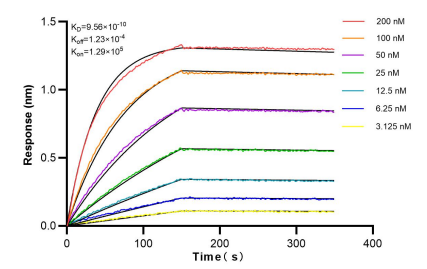
HEK-293 cell lysate was measured. The human GPX4 concentration of detected samples was determined to be 8.1 ng/mL (based on a 1.2 mg/mL extract load).



Cytometric bead array standard curve of MP00049-1, GPX4 Recombinant Matched Antibody Pair, PBS Only. Capture antibody: 82949-3-PBS. Detection antibody: 82949-1-PBS. Standard: Ag5809. Range: 2.5-20 ng/mL



Cytometric bead array standard curve of MP00049-3, GPX4 Recombinant Matched Antibody Pair, PBS Only. Capture antibody: 82949-4-PBS. Detection antibody: 82949-1-PBS. Standard: Ag5809. Range: 2.5-20 ng/mL



Bi-layer interferometry (BLI) kinetic assays of 82949-1-RR against Human GCLM were performed. The affinity constant is 1 pM.