

For Research Use Only

TAB2 Recombinant antibody, PBS Only (Detector)

Catalog Number: 82948-2-PBS



Basic Information

Catalog Number:

82948-2-PBS

Size:

1 mg/ml

Source:

Rabbit

Isotype:

IgG

Immunogen Catalog Number:

AG5742

GenBank Accession Number:

BC035910

GeneID (NCBI):

23118

UNIPROT ID:

Q9NYJ8

Full Name:

mitogen-activated protein kinase
kinase kinase 7 interacting protein 2

Calculated MW:

76 kDa

Purification Method:

Protein A purification

CloneNo.:

230118C2

Applications

Tested Applications:

Cytometric bead array, Indirect ELISA

Species Specificity:

human

Background Information

Storage

Storage:

Store at -80°C.

The product is shipped with ice packs. Upon receipt, store it immediately at -80°C

Storage Buffer:

100% PBS pH 7.3

For technical support and original validation data for this product please contact:

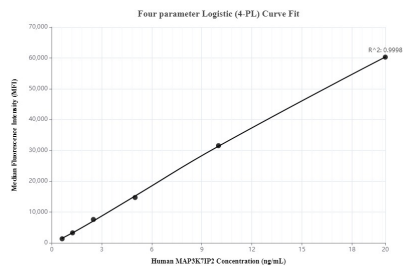
T: 4006900926

E: Proteintech-CN@ptglab.com

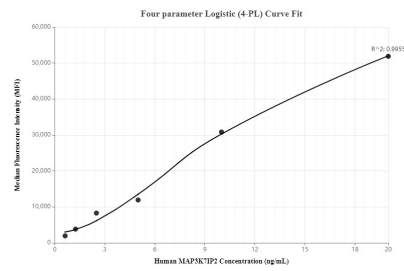
W: ptgcn.com

This product is exclusively available under Proteintech Group brand and is not available to purchase from any other manufacturer.

Selected Validation Data



Cytometric bead array standard curve of MP00082-1, TAB2 Recombinant Matched Antibody Pair, PBS Only. Capture antibody: 82948-3-PBS. Detection antibody: 82948-2-PBS. Standard: Ag5742. Range: 0.625-20 ng/mL



Cytometric bead array standard curve of MP00082-2, TAB2 Recombinant Matched Antibody Pair, PBS Only. Capture antibody: 82948-4-PBS. Detection antibody: 82948-2-PBS. Standard: Ag5742. Range: 0.625-20 ng/mL