

For Research Use Only

TAB2 Recombinant antibody, PBS Only (Detector)

Catalog Number: 82948-1-PBS



Basic Information

Catalog Number: 82948-1-PBS	GenBank Accession Number: BC035910	Purification Method: Protein A purification
Concentration: 1 mg/ml	GeneID (NCBI): 23118	CloneNo.: 230118G2
Source: Rabbit	UNIPROT ID: Q9NYJ8	
Isotype: IgG	Full Name: mitogen-activated protein kinase kinase kinase 7 interacting protein 2	
Immunogen Catalog Number: AG5742	Calculated MW: 76 kDa	
	Observed MW: 77 kDa	

Applications

Tested Applications:
WB, Cytometric bead array, Indirect ELISA

Species Specificity:
human, mouse

Background Information

Tab2 has a role in the inflammatory signal transduction pathway and is involved in the reversal of NCoR-dependent and NFkB- or APP-mediated gene repression and androgen antagonist response. Besides, it is identified as a cofactor for ERBB4 to assemble NCoR corepressor complex in response to neuregulin [PMID:16469706]. It also functions as an adaptor that links TAK1 and TRAF6 in response to interleukin-1 β (IL-1 β) or tumour necrosis factor- α (TNF- α), and thereby mediates TAK1 activation [PMID:11460167].

Storage

Storage:
Store at -80°C.
The product is shipped with ice packs. Upon receipt, store it immediately at -80°C

Storage Buffer:
100% PBS pH 7.3

For technical support and original validation data for this product please contact:

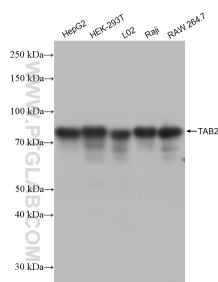
T: 4006900926

E: Proteintech-CN@ptglab.com

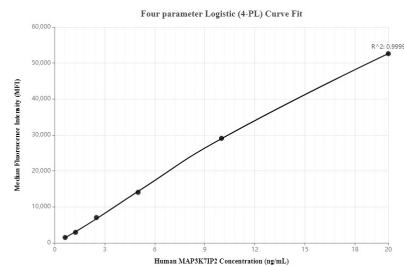
W: ptgcn.com

This product is exclusively available under Proteintech Group brand and is not available to purchase from any other manufacturer.

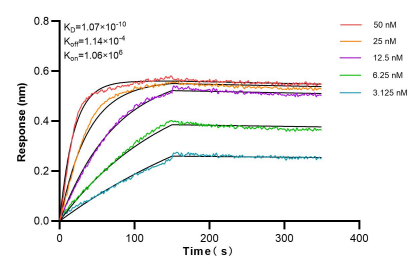
Selected Validation Data



Various lysates were subjected to SDS PAGE followed by western blot with 82948-1-RR (MAP3K7IP2 antibody) at dilution of 1:3000 incubated at room temperature for 1.5 hours. This data was developed using the same antibody clone with 82948-1-PBS in a different storage buffer formulation.



Cytometric bead array standard curve of MP00082-3, TAB2 Recombinant Matched Antibody Pair, PBS Only. Capture antibody: 82948-3-PBS. Detection antibody: 82948-1-PBS. Standard: Ag5742. Range: 0.625-20 ng/mL.



Biolayer interferometry (BLI) kinetic assays of 82948-1-RR against Human TAB2 were performed. The affinity constant is 0.107 nM.