

IFT140 Recombinant antibody

Catalog Number: 82947-1-RR

Basic Information

Catalog Number:

82947-1-RR

Size:

300 µg/ml

Source:

Rabbit

Isotype:

IgG

Immunogen Catalog Number:

AG11119

GenBank Accession Number:

BC035577

GeneID (NCBI):

9742

UNIPROT ID:

Q96RY7

Full Name:

intraflagellar transport 140 homolog
(Chlamydomonas)

Calculated MW:

1462 aa, 165 kDa

Observed MW:

150-165 kDa

Purification Method:

Protein A purification

CloneNo.:

230231F7

Recommended Dilutions:

WB 1:1000-1:6000

IF/ICC 1:50-1:500

Applications

Tested Applications:

WB, IF/ICC, ELISA

Species Specificity:

Human, Rat

Positive Controls:

WB : HeLa cells, rat testis tissue

IF/ICC : Starvation treated hTERT-RPE1 cells,

Background Information

IFT140 is a subunit of intraflagellar transport complex A (IFT-A) which is involved in retrograde ciliary transport. RT-PCR analysis showed it is highly expressed in kidney, moderately in ovary, testis, prostate, and lung. IFT140 is localized to the base and tip of primary cilium. IFT140 has a pivotal role in development and function of ciliated cells, and mutations of IFT140 cause skeletal, renal, and retinal ciliopathies. It had been detected as a single band around 140-165 kDa in different reports. (PMID: 20368623, 22282595)

Storage

Storage:

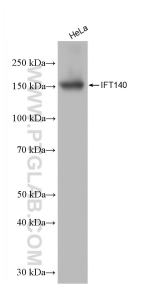
Store at -20°C. Stable for one year after shipment.

Storage Buffer:

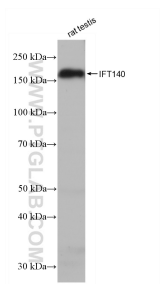
PBS with 0.02% sodium azide and 50% glycerol pH 7.3.

Aliquoting is unnecessary for -20°C storage

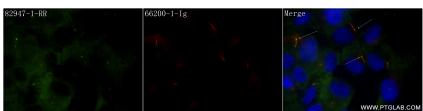
Selected Validation Data



HeLa cells were subjected to SDS PAGE followed by western blot with 82947-1-RR (IFT140 antibody) at dilution of 1:3000 incubated at room temperature for 1.5 hours.



rat testis tissue were subjected to SDS PAGE followed by western blot with 82947-1-RR (IFT140 antibody) at dilution of 1:3000 incubated at room temperature for 1.5 hours.



Immunofluorescent analysis of (4% PFA) fixed Starvation treated hTERT-RPE1 cells using IFT140 antibody (82947-1-RR, Clone: 230231F7) at dilution of 1:120 and CoraLite@488-Conjugated AffiniPure Goat Anti-Rabbit IgG(H+L) (SA00013-2), Acetyl-Tubulin (Lys40) antibody (66200-1-Ig, Clone: 7E5H8, red).