

For Research Use Only

CCR5 Recombinant antibody, PBS Only (Capture)

Catalog Number: 82942-2-PBS



Basic Information

Catalog Number: 82942-2-PBS	GenBank Accession Number: BC038398	Purification Method: Protein A purification
Size: 1mg/ml	GeneID (NCBI): 1234	CloneNo.: 230266A9
Source: Rabbit	UNIPROT ID: P51681	
Isotype: IgG	Full Name: chemokine (C-C motif) receptor 5	
Immunogen Catalog Number: AG11493	Calculated MW: 352 aa, 41 kDa	

Applications

Tested Applications:
Cytometric bead array, Sandwich ELISA, Indirect ELISA, Sample test

Species Specificity:
human

Background Information

Storage

Storage:
Store at -80°C.
The product is shipped with ice packs. Upon receipt, store it immediately at -80°C

Storage Buffer:
100% PBS pH 7.3

For technical support and original validation data for this product please contact:

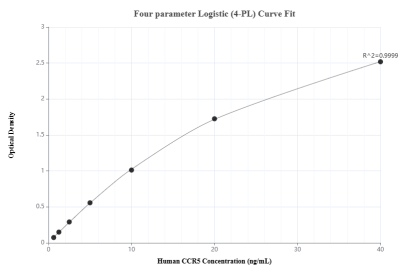
T: 4006900926

E: Proteintech-CN@ptglab.com

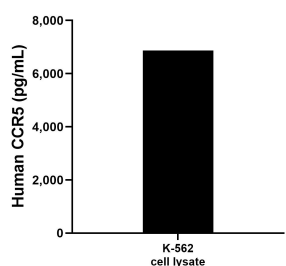
W: ptgcn.com

This product is exclusively available under Proteintech Group brand and is not available to purchase from any other manufacturer.

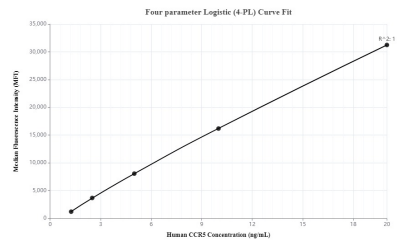
Selected Validation Data



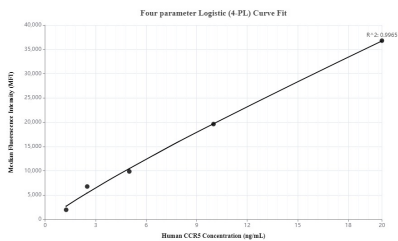
Sandwich ELISA standard curve of MP00125-4, Human CCR5 Recombinant Matched Antibody Pair - PBS only. 82942-2-PBS was coated to a plate as the capture antibody and incubated with serial dilutions of standard Ag11493. 82942-6-PBS was HRP conjugated as the detection antibody. Range: 0.625-40 ng/mL



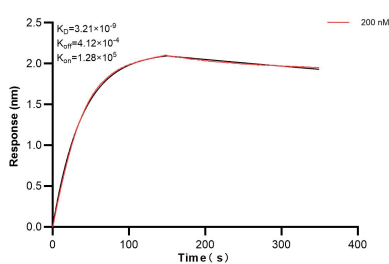
K-562 cell lysate was measured. The human CCR5 concentration of detected samples was determined to be 6.872.7 pg/mL (based on a 2.1 mg/mL extract load) in K-562 cell lysate.



Cytometric bead array standard curve of MP00125-2, CCR5 Recombinant Matched Antibody Pair, PBS Only. Capture antibody: 82942-2-PBS. Detection antibody: 82942-4-PBS. Standard: Ag11493. Range: 1.25-20 ng/mL



Cytometric bead array standard curve of MP00125-3, CCR5 Recombinant Matched Antibody Pair, PBS Only. Capture antibody: 82942-2-PBS. Detection antibody: 82942-3-PBS. Standard: Ag11493. Range: 1.25-20 ng/mL



Biolayer interferometry (BLI) kinetic assay of 82942-2-PBS against Human CCR5 was performed. The affinity constant is 3.21 nM.