

For Research Use Only

CAMP Recombinant antibody, PBS Only

Catalog Number: 82940-2-PBS



Basic Information

Catalog Number: 82940-2-PBS	GenBank Accession Number: BC055089	Purification Method: Protein A purification
Size: 1 mg/ml	GeneID (NCBI): 820	CloneNo.: 230157C6
Source: Rabbit	UNIPROT ID: P49913	
Isotype: IgG	Full Name: cathelicidin antimicrobial peptide	
Immunogen Catalog Number: AG2622	Calculated MW: 170 aa, 19 kDa	

Applications

Tested Applications:
FC (Intra), Indirect ELISA

Species Specificity:
human

Background Information

CAMP is a member of an antimicrobial peptide family, characterized by a highly conserved N-terminal signal peptide containing a cathelin domain and a structurally variable cationic antimicrobial peptide, which is produced by extracellular proteolysis from the C-terminus. In addition to its antibacterial, antifungal, and antiviral activities, the encoded protein functions in cell chemotaxis, immune mediator induction, and inflammatory response regulation. CAMP encodes the 18-kDa proprotein hCAP18. FALL-39 and LL-37 are the mature cathelicidin peptides. This antibody can recognize all the proprotein and cleaved species.

Storage

Storage:
Store at -80°C.
The product is shipped with ice packs. Upon receipt, store it immediately at -80°C

Storage Buffer:
PBS Only

For technical support and original validation data for this product please contact:

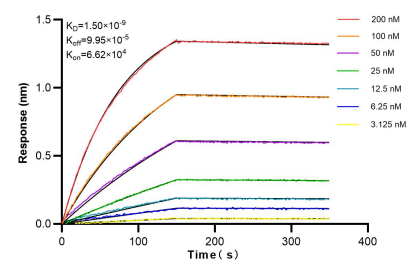
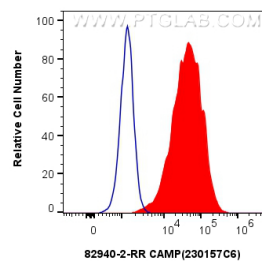
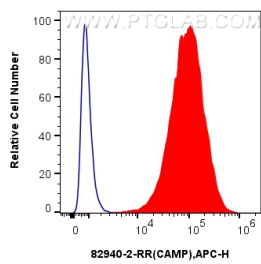
T: 4006900926

E: Proteintech-CN@ptglab.com

W: ptgcn.com

This product is exclusively available under Proteintech Group brand and is not available to purchase from any other manufacturer.

Selected Validation Data



1x10⁶ MCF-7 cells were intracellularly stained with 0.25 ug Anti-Human CAMP (82940-2-RR, Clone:230157C6) and APC-Conjugated AffiniPure Goat Anti-Rabbit IgG(H+L) at dilution 1:1000(red), or 0.25 ug Rabbit IgG control Rabbit PolyAb (30000-O-AP) (blue). Cells were fixed with 4% PFA and permeabilized with Flow Cytometry Perm Buffer (PF00011-C). This data was developed using the same antibody clone with 82940-2-PBS in a different storage buffer formulation.



(blue)1x10⁶ Hela cells were intracellularly stained with 0.25 ug Anti-Human CAMP (82940-2-RR, Clone:230157C6) and APC-Conjugated AffiniPure Goat Anti-Rabbit IgG(H+L) at dilution (red), or 0.25 ug Isotype Control. Cells were fixed with 4% PFA and permeabilized with Flow Cytometry Perm Buffer (PF00011-C). This data was developed using the same antibody clone with 82940-2-PBS in a different storage buffer formulation.

Biological layer interferometry (BLI) kinetic assays of 82940-2-RR against Human CAMP were performed. The affinity constant is 1.50 nM.