

For Research Use Only

# CAMP Recombinant antibody

Catalog Number: 82940-1-RR **1 Publications**



## Basic Information

<b>Catalog Number:</b> 82940-1-RR	<b>GenBank Accession Number:</b> BC055089	<b>Purification Method:</b> Protein A purification
<b>Size:</b> 1000 µg/ml	<b>GeneID (NCBI):</b> 820	<b>CloneNo.:</b> 230157B4
<b>Source:</b> Rabbit	<b>UNIPROT ID:</b> P49913	<b>Recommended Dilutions:</b> WB 1:2000-1:10000
<b>Isotype:</b> IgG	<b>Full Name:</b> cathelicidin antimicrobial peptide	
<b>Immunogen Catalog Number:</b> AG2622	<b>Calculated MW:</b> 170 aa, 19 kDa	
	<b>Observed MW:</b> 18 kDa	

## Applications

<b>Tested Applications:</b> WB, ELISA	<b>Positive Controls:</b> WB : human saliva, mouse lung tissue
<b>Cited Applications:</b> WB	
<b>Species Specificity:</b> Human, mouse	
<b>Cited Species:</b> rat	

## Background Information

CAMP is a member of an antimicrobial peptide family, characterized by a highly conserved N-terminal signal peptide containing a cathelin domain and a structurally variable cationic antimicrobial peptide, which is produced by extracellular proteolysis from the C-terminus. In addition to its antibacterial, antifungal, and antiviral activities, the encoded protein functions in cell chemotaxis, immune mediator induction, and inflammatory response regulation. CAMP encodes the 18-kDa proprotein hCAP18. FALL-39 and LL-37 are the mature cathelicidin peptides. This antibody can recognize all the proprotein and cleaved species.

## Notable Publications

Author	Pubmed ID	Journal	Application
Qiang-Qiang Fan	39214192	J Ethnopharmacol	WB

## Storage

**Storage:**  
Store at -20°C. Stable for one year after shipment.  
**Storage Buffer:**  
PBS with 0.02% sodium azide and 50% glycerol pH 7.3.  
Aliquoting is unnecessary for -20°C storage

For technical support and original validation data for this product please contact:

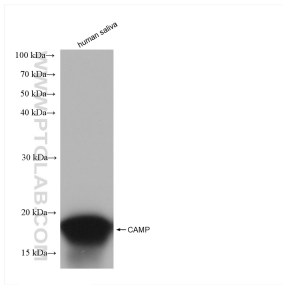
T: 4006900926

E: [Proteintech-CN@ptglab.com](mailto:Proteintech-CN@ptglab.com)

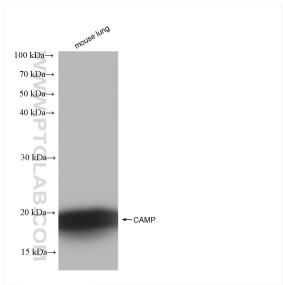
W: [ptgcn.com](http://ptgcn.com)

This product is exclusively available under Proteintech Group brand and is not available to purchase from any other manufacturer.

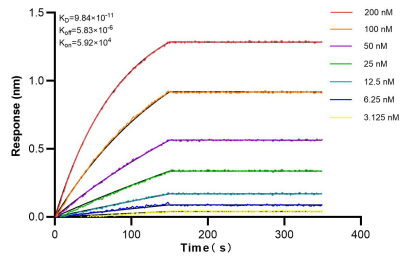
## Selected Validation Data



human saliva were subjected to SDS PAGE followed by western blot with 82940-1-RR (CAMP antibody) at dilution of 1:5000 incubated at room temperature for 1.5 hours.



mouse lung tissue were subjected to SDS PAGE followed by western blot with 82940-1-RR (CAMP antibody) at dilution of 1:5000 incubated at room temperature for 1.5 hours.



Biolayer interferometry (BLI) kinetic assays of 82940-1-RR against Human ADAMDEC1 were performed. The affinity constant is 98.4 pM.