

# CAMP Recombinant antibody, PBS Only

Catalog Number: 82940-1-PBS

## Basic Information

Catalog Number: 82940-1-PBS	GenBank Accession Number: BC055089	Purification Method: Protein A purification
Size: 1mg/ml	GeneID (NCBI): 820	CloneNo.: 230157B4
Source: Rabbit	UNIPROT ID: P49913	
Isotype: IgG	Full Name: cathelicidin antimicrobial peptide	
Immunogen Catalog Number: AG2622	Calculated MW: 170 aa, 19 kDa	
	Observed MW: 18 kDa	

## Applications

Tested Applications:  
WB, Indirect ELISA

Species Specificity:  
Human, mouse

## Background Information

CAMP is a member of an antimicrobial peptide family, characterized by a highly conserved N-terminal signal peptide containing a cathelin domain and a structurally variable cationic antimicrobial peptide, which is produced by extracellular proteolysis from the C-terminus. In addition to its antibacterial, antifungal, and antiviral activities, the encoded protein functions in cell chemotaxis, immune mediator induction, and inflammatory response regulation. CAMP encodes the 18-kDa proprotein hCAP18. FALL-39 and LL-37 are the mature cathelicidin peptides. This antibody can recognize all the proprotein and cleaved species.

## Storage

Storage:  
Store at -80°C.  
**The product is shipped with ice packs. Upon receipt, store it immediately at -80°C**

Storage Buffer:  
PBS Only

For technical support and original validation data for this product please contact:

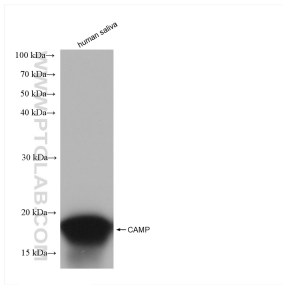
T: 4006900926

E: [Proteintech-CN@ptglab.com](mailto:Proteintech-CN@ptglab.com)

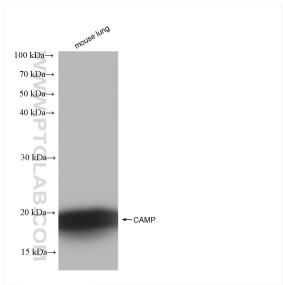
W: [ptgcn.com](http://ptgcn.com)

**This product is exclusively available under Proteintech Group brand and is not available to purchase from any other manufacturer.**

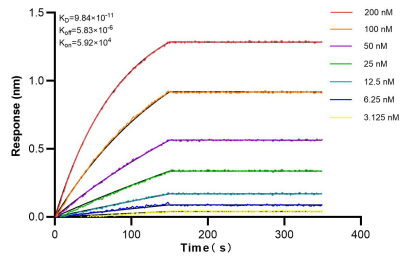
## Selected Validation Data



human saliva were subjected to SDS PAGE followed by western blot with 82940-1-RR (CAMP antibody) at dilution of 1:5000 incubated at room temperature for 1.5 hours. This data was developed using the same antibody clone with 82940-1-PBS in a different storage buffer formulation.



mouse lung tissue were subjected to SDS PAGE followed by western blot with 82940-1-RR (CAMP antibody) at dilution of 1:5000 incubated at room temperature for 1.5 hours. This data was developed using the same antibody clone with 82940-1-PBS in a different storage buffer formulation.



Biolayer interferometry (BLI) kinetic assays of 82940-1-RR against Human ADAMDEC1 were performed. The affinity constant is 98.4 pM.