

For Research Use Only

# EIF2S1 Recombinant antibody, PBS Only (Capture)

Catalog Number: 82936-6-PBS



## Basic Information

Catalog Number:

82936-6-PBS

Size:

1mg/ml

Source:

Rabbit

Isotype:

IgG

Immunogen Catalog Number:

AG1645

GenBank Accession Number:

BC002513

GeneID (NCBI):

1965

UNIPROT ID:

P05198

Full Name:

eukaryotic translation initiation  
factor 2, subunit 1 alpha, 35kDa

Calculated MW:

36 kDa

Purification Method:

Protein A purification

CloneNo.:

230245F2

## Applications

Tested Applications:

Cytometric bead array, Sandwich ELISA, Indirect ELISA,  
Sample test

Species Specificity:

human

## Background Information

### Storage

Storage:

Store at -80°C.

The product is shipped with ice packs. Upon receipt, store it immediately at -80°C

Storage Buffer:

100% PBS pH 7.3

For technical support and original validation data for this product please contact:

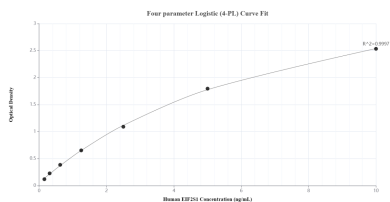
T: 4006900926

E: Proteintech-CN@ptglab.com

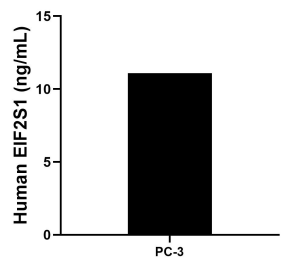
W: ptgcn.com

This product is exclusively available under Proteintech Group brand and is not available to purchase from any other manufacturer.

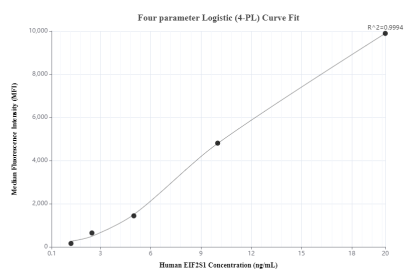
## Selected Validation Data



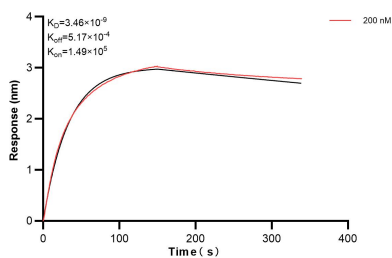
Sandwich ELISA standard curve of MP00076-4, Human EIF2S1 Recombinant Matched Antibody Pair - PBS only. 82936-6-PBS was coated to a plate as the capture antibody and incubated with serial dilutions of standard Ag1645. 82936-5-PBS was HRP conjugated as the detection antibody. Range: 0.156-10 ng/mL



The mean EIF2S1 concentration was determined to be 11.12 ng/mL in PC-3 cell extract based on a 1.20 mg/mL extract load.



Cytometric bead array standard curve of MP00076-3, EIF2S1 Recombinant Matched Antibody Pair, PBS Only. Capture antibody: 82936-6-PBS. Detection antibody: 82936-7-PBS. Standard: Ag1645. Range: 1.25-20 ng/mL



Biolayer interferometry (BLI) kinetic assay of 82936-6-PBS against Human EIF2S1 was performed. The affinity constant is 3.46 nM.