

For Research Use Only

PAK7 Recombinant antibody, PBS Only (Capture/Detector)

Catalog Number: 82935-2-PBS



Basic Information

Catalog Number:

82935-2-PBS

Concentration:

1mg/ml

Source:

Rabbit

Isotype:

IgG

Immunogen Catalog Number:

AG29190

GenBank Accession Number:

BC024179

GeneID (NCBI):

57144

UNIPROT ID:

Q9P286

Full Name:

p21 protein (Cdc42/Rac)-activated
kinase 7

Calculated MW:

719 aa, 81 kDa

Purification Method:

Protein A purification

CloneNo.:

230201A2

Applications

Tested Applications:

Cytometric bead array, Indirect ELISA

Species Specificity:

human

Background Information

Storage

Storage:

Store at -80°C.

The product is shipped with ice packs. Upon receipt, store it immediately at -80°C

Storage Buffer:

100% PBS pH 7.3

For technical support and original validation data for this product please contact:

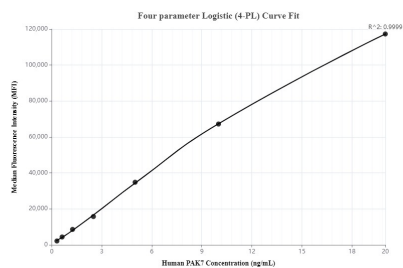
T: 4006900926

E: Proteintech-CN@ptglab.com

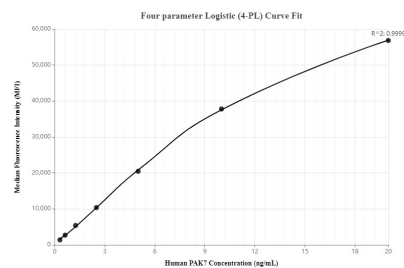
W: ptgcn.com

This product is exclusively available under Proteintech Group brand and is not available to purchase from any other manufacturer.

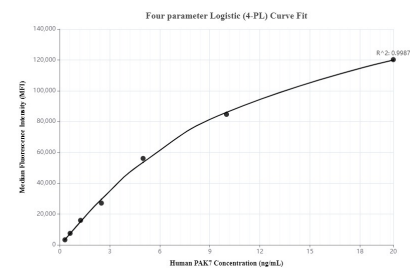
Selected Validation Data



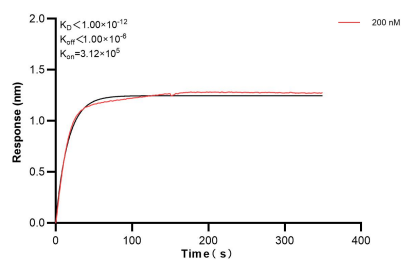
Cytometric bead array standard curve of MP00086-1, PAK7 Recombinant Matched Antibody Pair, PBS Only. Capture antibody: 82935-2-PBS. Detection antibody: 82935-4-PBS. Standard: Ag29190. Range: 0.313-20 ng/mL



Cytometric bead array standard curve of MP00086-2, PAK7 Recombinant Matched Antibody Pair, PBS Only. Capture antibody: 82935-2-PBS. Detection antibody: 82935-5-PBS. Standard: Ag29190. Range: 0.313-20 ng/mL



Cytometric bead array standard curve of MP00086-3, PAK7 Recombinant Matched Antibody Pair, PBS Only. Capture antibody: 82935-2-PBS. Detection antibody: 82935-3-PBS. Standard: Ag29190. Range: 0.313-20 ng/mL



Biolayer interferometry (BLI) kinetic assay of 82935-2-PBS against Human PAK7 was performed. The affinity constant is below 1 pM.