

# KHSRP Recombinant antibody, PBS Only

Catalog Number: 82931-2-PBS

## Basic Information

<b>Catalog Number:</b> 82931-2-PBS	<b>GenBank Accession Number:</b> NM_003685	<b>Purification Method:</b> Protein A purification
<b>Size:</b> 1mg/ml	<b>GeneID (NCBI):</b> 8570	<b>CloneNo.:</b> 230189C12
<b>Source:</b> Rabbit	<b>UNIPROT ID:</b> Q92945	
<b>Isotype:</b> IgG	<b>Full Name:</b> KH-type splicing regulatory protein	
<b>Immunogen Catalog Number:</b> AG33890	<b>Calculated MW:</b> 73 kDa	

## Applications

**Tested Applications:**  
Indirect ELISA, IP

**Species Specificity:**  
human

## Background Information

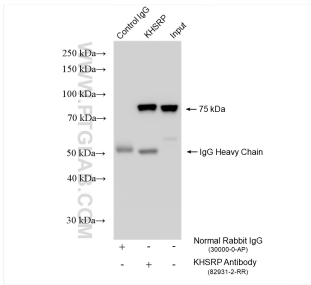
KHSRP, also named as FUBP2, KSRP, and p75, belongs to the KHSRP family. It binds to the dendritic targeting element and may play a role in mRNA trafficking. KHSRP is a part of a ternary complex that binds to the downstream control sequence (DCS) of the pre-mRNA. It mediates exon inclusion in transcripts that are subject to tissue-specific alternative splicing. KHSRP may interact with single-stranded DNA from the far-upstream element (FUSE). May activate gene expression. It is involved in the degradation of inherently unstable mRNAs that contain AU-rich elements (AREs) in their 3'-UTR, possibly by recruiting degradation machinery to ARE-containing mRNAs.

## Storage

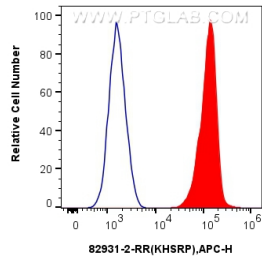
**Storage:**  
Store at -80°C.  
**The product is shipped with ice packs. Upon receipt, store it immediately at -80°C**

**Storage Buffer:**  
PBS Only

Selected Validation Data



IP result of anti-KHSRP (IP:82931-2-RR, 4ug; Detection:82931-2-RR 1:2500) with HeLa cells lysate 1050 ug. This data was developed using the same antibody clone with 82931-2-PBS in a different storage buffer formulation.



1x10<sup>6</sup> U-251 cells were intracellularly stained with 0.25 ug Anti-Human KHSRP (82931-2-RR, Clone:230189C12) and APC-Conjugated AffiniPure Goat Anti-Rabbit IgG(H+L) (red), or 0.25 ug Rabbit IgG control Rabbit PolyAb (30000-0-AP) (blue). Cells were fixed and permeabilized with True-Nuclear Transcription Factor Buffer Set. This data was developed using the same antibody clone with 82931-2-PBS in a different storage buffer formulation.