

For Research Use Only

CYP7B1 Recombinant antibody

Catalog Number: 82927-2-RR



Basic Information

Catalog Number:

82927-2-RR

Size:

1000 ug/ml

Source:

Rabbit

Isotype:

IgG

Immunogen Catalog Number:

AG19374

GenBank Accession Number:

BC136574

GeneID (NCBI):

9420

UNIPROT ID:

O75881

Full Name:

cytochrome P450, family 7, subfamily

B, polypeptide 1

Calculated MW:

506 aa, 58 kDa

Purification Method:

Protein A purification

CloneNo.:

230160C7

Recommended Dilutions:

IF/ICC 1:500-1:2000

Applications

Tested Applications:

IF/ICC, FC (Intra), ELISA

Species Specificity:

human

Positive Controls:

IF/ICC : HepG2 cells, HEK-293 cells, HeLa cells

Background Information

Storage

Storage:

Store at -20°C. Stable for one year after shipment.

Storage Buffer:

PBS with 0.02% sodium azide and 50% glycerol pH 7.3.

Aliquoting is unnecessary for -20°C storage

For technical support and original validation data for this product please contact:

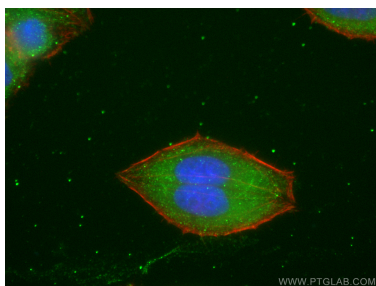
T: 4006900926

E: Proteintech-CN@ptglab.com

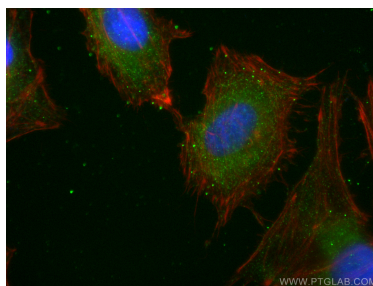
W: ptgcn.com

This product is exclusively available under Proteintech Group brand and is not available to purchase from any other manufacturer.

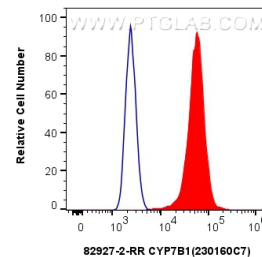
Selected Validation Data



Immunofluorescent analysis of (-20°C Ethanol) fixed HepG2 cells using CYP7B1 antibody (82927-2-RR, Clone: 230160C7) at dilution of 1:1000 and CoraLite®488-Conjugated AffiniPure Goat Anti-Rabbit IgG(H+L) (SA00013-2), CL594-phalloidin (red).



Immunofluorescent analysis of (-20°C Ethanol) fixed HeLa cells using CYP7B1 antibody (82927-2-RR, Clone: 230160C7) at dilution of 1:1000 and CoraLite®488-Conjugated AffiniPure Goat Anti-Rabbit IgG(H+L) (SA00013-2), CL594-phalloidin (red).



1x10⁶ HeLa cells were intracellularly stained with 0.25 ug CYP7B1 Recombinant antibody (82927-2-RR, Clone:230160C7) and CoraLite®488-Conjugated AffiniPure Goat Anti-Rabbit IgG(H+L) (SA00013-2)(red), or 0.25 ug Isotype Control (blue). Cells were fixed with 4% PFA and permeabilized with Flow Cytometry Perm Buffer (PF00011-C).