

For Research Use Only

# PICK1 Recombinant antibody, PBS Only (Capture)

Catalog Number: 82919-2-PBS



## Basic Information

Catalog Number:

82919-2-PBS

Size:

1mg/ml

Source:

Rabbit

Isotype:

IgG

Immunogen Catalog Number:

AG1443

GenBank Accession Number:

BC017561

GeneID (NCBI):

9463

UNIPROT ID:

Q9NRD5

Full Name:

protein interacting with PRKCA 1

Calculated MW:

47 kDa

Purification Method:

Protein A purification

CloneNo.:

230185D2

## Applications

Tested Applications:

Sandwich ELISA, Indirect ELISA, Sample test

Species Specificity:

human

## Background Information

### Storage

Storage:

Store at -80°C.

The product is shipped with ice packs. Upon receipt, store it immediately at -80°C

Storage Buffer:

PBS Only

For technical support and original validation data for this product please contact:

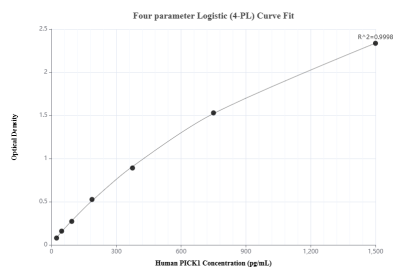
T: 4006900926

E: Proteintech-CN@ptglab.com

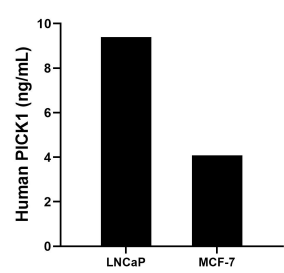
W: ptgcn.com

This product is exclusively available under Proteintech Group brand and is not available to purchase from any other manufacturer.

## Selected Validation Data



Sandwich ELISA standard curve of MP00068-3, Human PICK1 Recombinant Matched Antibody Pair - PBS only. 82919-2-PBS was coated to a plate as the capture antibody and incubated with serial dilutions of standard Ag1443. 82919-1-PBS was HRP conjugated as the detection antibody. Range: 23.4-1500 pg/mL



The mean PICK1 concentration was determined to be 9.40 ng/mL in LNCaP cell extract based on a 3.80 mg/mL extract load and 4.08 ng/mL in MCF-7 cell extract based on a 1.5 mg/mL extract load.