

For Research Use Only

ALPL Recombinant antibody

Catalog Number: 82915-2-RR



Basic Information

Catalog Number:

82915-2-RR

Size:

1000 µg/ml

Source:

Rabbit

Isotype:

IgG

Immunogen Catalog Number:

AG1664

GenBank Accession Number:

BC021289

GeneID (NCBI):

249

UNIPROT ID:

P05186

Full Name:

alkaline phosphatase,
liver/bone/kidney

Calculated MW:

57 kDa

Observed MW:

80 kDa

Purification Method:

Protein A purification

CloneNo.:

230212D5

Recommended Dilutions:

WB 1:5000-1:50000

Applications

Tested Applications:

WB, FC (Intra), ELISA

Species Specificity:

human

Positive Controls:

WB : L02 cells,

Background Information

Storage

Storage:

Store at -20°C. Stable for one year after shipment.

Storage Buffer:

PBS with 0.02% sodium azide and 50% glycerol pH 7.3.

Aliquoting is unnecessary for -20°C storage

For technical support and original validation data for this product please contact:

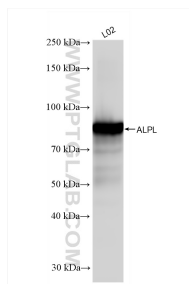
T: 4006900926

E: Proteintech-CN@ptglab.com

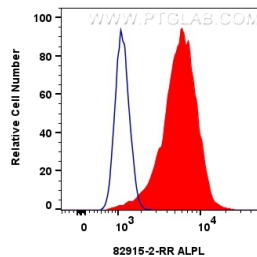
W: ptgcn.com

This product is exclusively available under Proteintech Group brand and is not available to purchase from any other manufacturer.

Selected Validation Data



L02 cells were subjected to SDS PAGE followed by western blot with 82915-2-RR (ALPL antibody) at dilution of 1:10000 incubated at room temperature for 1.5 hours.



1x10⁶ HeLa cells were intracellularly stained with 0.25 ug ALPL Recombinant antibody (82915-2-RR, Clone:230212D5) and CoraLite®488-Conjugated AffiniPure Goat Anti-Rabbit IgG(H+L) (SA00013-2) (red), or 0.25 ug Isotype Control (blue). Cells were fixed with 4% PFA and permeabilized with Flow Cytometry Perm Buffer (PF00011-C).