

For Research Use Only

TBCD Recombinant antibody, PBS Only



Catalog Number: 82911-7-PBS

Basic Information

Catalog Number:

82911-7-PBS

Size:

1mg/ml

Source:

Rabbit

Isotype:

IgG

Immunogen Catalog Number:

AG6310

GenBank Accession Number:

BC003094

GeneID (NCBI):

6904

UNIPROT ID:

Q9BTW9

Full Name:

tubulin folding cofactor D

Calculated MW:

133 kDa

Observed MW:

130 kDa

Purification Method:

Protein A purification

CloneNo.:

230209F3

Applications

Tested Applications:

WB, IF/ICC, Indirect ELISA

Species Specificity:

human

Background Information

Storage

Storage:

Store at -80°C.

The product is shipped with ice packs. Upon receipt, store it immediately at -80°C

Storage Buffer:

PBS Only

For technical support and original validation data for this product please contact:

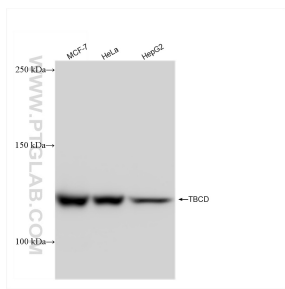
T: 4006900926

E: Proteintech-CN@ptglab.com

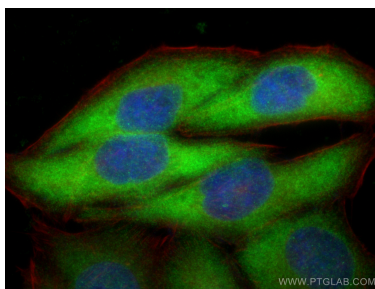
W: ptgcn.com

This product is exclusively available under Proteintech Group brand and is not available to purchase from any other manufacturer.

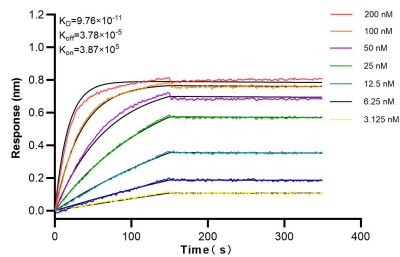
Selected Validation Data



Various lysates were subjected to SDS PAGE followed by western blot with 82911-7-RR (TBCD antibody) at dilution of 1:10000 incubated at room temperature for 1.5 hours. This data was developed using the same antibody clone with 82911-7-PBS in a different storage buffer formulation.



Immunofluorescent analysis of (-20°C Ethanol) fixed HepG2 cells using TBCE antibody (82911-7-RR, Clone: 230209F3) at dilution of 1:1000 and CoraLite®488-Conjugated AffiniPure Goat Anti-Rabbit IgG(H+L) (SA00013-2), CL594-Phalloidin (red). This data was developed using the same antibody clone with 82911-7-PBS in a different storage buffer formulation.



Biolayer interferometry (BLI) kinetic assays of 82911-7-RR against Human TBCE were performed. The affinity constant is 97.6 pM.