

For Research Use Only

# SEC24A Recombinant antibody

Catalog Number: 82908-1-RR



## Basic Information

<b>Catalog Number:</b> 82908-1-RR	<b>GenBank Accession Number:</b> BC019341	<b>Purification Method:</b> Protein A purification
<b>Size:</b> 1000 µg/ml	<b>GeneID (NCBI):</b> 10802	<b>CloneNo.:</b> 230105B3
<b>Source:</b> Rabbit	<b>UNIPROT ID:</b> O95486	<b>Recommended Dilutions:</b> WB 1:1000-1:5000 IF 1:125-1:500
<b>Isotype:</b> IgG	<b>Full Name:</b> SEC24 family, member A (S. cerevisiae)	
<b>Immunogen Catalog Number:</b> AG8723	<b>Calculated MW:</b> 613 aa, 66 kDa	
	<b>Observed MW:</b> 120 kDa	

## Applications

<b>Tested Applications:</b> WB,IF,ICC,FC,ELISA	<b>Positive Controls:</b>
<b>Species Specificity:</b> Human	<b>WB :</b> U-87 MG cells, HEK-293 cells, HeLa cells, HepG2 cells <b>IF :</b> HeLa cells,

## Background Information

COPII-coated vesicles mediate anterograde transport from the ER to the Golgi apparatus. COPII is composed of three parts: two coat protein complexes (Sec23/24 complex and Sec13/31 complex) and one small GTP-binding protein, Sar1 (PMID: 9568718). Sec24 subunit of the coat complex has been implicated in cargo recognition (PMID: 17316621). In mammal cells, there are four Sec24 isoforms, termed Sec24A, Sec24B, Sec24C, and Sec24D (PMID: 10329445). This antibody is specific to SEC24A.

## Storage

**Storage:**  
Store at -20°C. Stable for one year after shipment.  
**Storage Buffer:**  
PBS with 0.02% sodium azide and 50% glycerol pH 7.3.  
Aliquoting is unnecessary for -20°C storage

For technical support and original validation data for this product please contact:

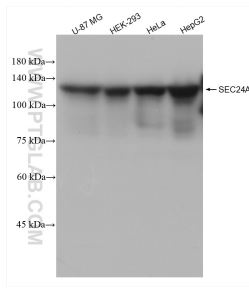
T: 4006900926

E: [Proteintech-CN@ptglab.com](mailto:Proteintech-CN@ptglab.com)

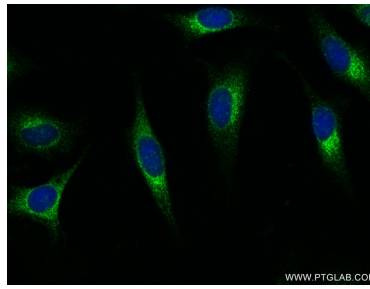
W: [ptgcn.com](http://ptgcn.com)

This product is exclusively available under Proteintech Group brand and is not available to purchase from any other manufacturer.

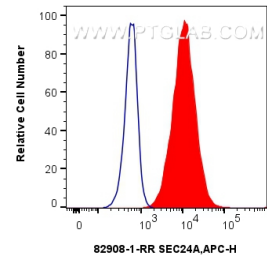
## Selected Validation Data



Various lysates were subjected to SDS PAGE followed by western blot with 82908-1-RR (SEC24A antibody) at dilution of 1:2500 incubated at room temperature for 1.5 hours.



Immunofluorescent analysis of (-20°C Ethanol) fixed HeLa cells using SEC24A antibody (82908-1-RR, Clone: 230105B3) at dilution of 1:250 and CoraLite®488-Conjugated AffiniPure Goat Anti-Rabbit IgG(H+L) (SA00013-2).



$1 \times 10^6$  HepG2 cells were intracellularly stained with 0.25 ug Anti-Human SEC24A (82908-1-RR, Clone:230105B3) and APC-Conjugated AffiniPure Goat Anti-Rabbit IgG(H+L) at dilution 1:166 (red), or 0.25 ug Rabbit IgG control Rabbit PolyAb (30000-0-AP, Clone: ) (blue). Cells were fixed with 4% PFA and permeabilized with Flow Cytometry Perm Buffer (PF00011-C).