

For Research Use Only

KIF15 Recombinant antibody

Catalog Number: 82903-1-RR

Featured Product



Basic Information

Catalog Number: 82903-1-RR	GenBank Accession Number: NM_020242	Purification Method: Protein A purification
Concentration: 1000 ug/ml	GeneID (NCBI): 56992	CloneNo.: 230049F1
Source: Rabbit	UNIPROT ID: Q9NS87	Recommended Dilutions: WB 1:2000-1:10000 IHC 1:50-1:500
Isotype: IgG	Full Name: kinesin family member 15	
Immunogen Catalog Number: AG33897	Calculated MW: 160 kDa Observed MW: 160 kDa	

Applications

Tested Applications: WB, IHC, ELISA	Positive Controls:
Species Specificity: human	WB : HEK-293 cells, HeLa cells, HepG2 cells, K-562 cells
Note-IHC: suggested antigen retrieval with TE buffer pH 9.0; (*) Alternatively, antigen retrieval may be performed with citrate buffer pH 6.0	IHC : human intrahepatic cholangiocarcinoma tissue,

Background Information

KIF15, also named as KLP2 and KNSL7, belongs to the kinesin-like protein family and KLP2 subfamily. It is a plus-end directed kinesin-like motor enzyme which involved in mitotic spindle assembly. Several isoforms of KIF15 exist due to the alternative splicing, with molecular weight between 130-160 kDa. Sometimes higher molecular weight around 200 kDa can also be observed, which may be a modified variant of KIF15. (14618103)

Storage

Storage:
Store at -20°C. Stable for one year after shipment.
Storage Buffer:
PBS with 0.02% sodium azide and 50% glycerol, pH7.3
Aliquoting is unnecessary for -20°C storage

For technical support and original validation data for this product please contact:

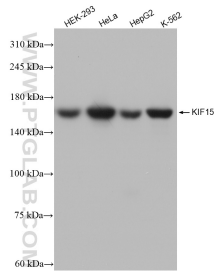
T: 4006900926

E: Proteintech-CN@ptglab.com

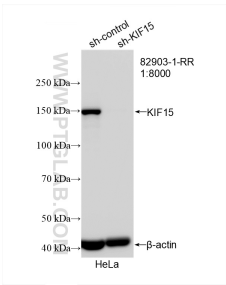
W: ptgcn.com

This product is exclusively available under Proteintech Group brand and is not available to purchase from any other manufacturer.

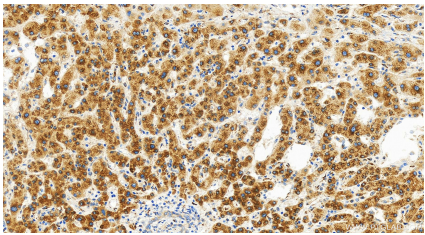
Selected Validation Data



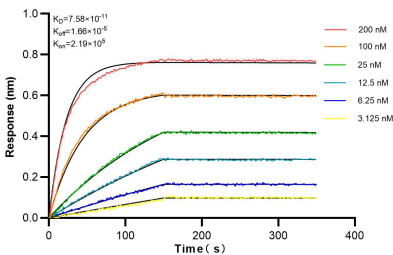
Various lysates were subjected to SDS PAGE followed by western blot with 82903-1-RR (KIF15 antibody) at dilution of 1:5000 incubated at room temperature for 1.5 hours.



WB result of KIF15 antibody (82903-1-RR; 1:8000; incubated at room temperature for 1.5 hours) with sh-Control and sh-KIF15 transfected HeLa cells.



Immunohistochemical analysis of paraffin-embedded human intrahepatic cholangiocarcinoma tissue slide using 82903-1-RR (KIF15 antibody) at dilution of 1:200 (under 20x lens). Heat mediated antigen retrieval with Tris-EDTA buffer (pH 9.0).



Biolayer interferometry (BLI) kinetic assays of 82903-1-RR against Human KIF15 were performed. The affinity constant is 75.8 pM.