

For Research Use Only

LAT Recombinant antibody

Catalog Number: 82901-1-RR



Basic Information

Catalog Number: 82901-1-RR	GenBank Accession Number: BC011563	Purification Method: Protein A purification
Size: 1000 µg/ml	GeneID (NCBI): 27040	CloneNo.: 2P13
Source: Rabbit	UNIPROT ID: O43561	Recommended Dilutions: WB 1:1000-1:5000 IF 1:750-1:3000
Isotype: IgG	Full Name: linker for activation of T cells	
	Calculated MW: 262 aa, 28 kDa	
	Observed MW: 36-38 kDa	

Applications

Tested Applications: WB, IF/ICC, ELISA	Positive Controls:
Species Specificity: Human, Mouse	WB : Jurkat cells, EL-4 cells, human platelets IF : Jurkat cells,

Background Information

LAT is a membrane-localized adaptor protein which is primarily concentrated in microdomains by palmitoylation. LAT plays a central role in T-cell activation by nucleating signaling complexes that are critical for the propagation of T-cell signals from the plasma membrane to the cellular interior. In addition to being a positive regulator of T cell signaling, LAT also recruits several negative regulatory proteins, including kinases, phosphatases, and ubiquitin ligases, which ultimately leads to signal termination. LAT is subject to ubiquitylation, and ubiquitin-resistant mutants of LAT display enhanced signaling.

Storage

Storage:
Store at -20°C. Stable for one year after shipment.
Storage Buffer:
PBS with 0.02% sodium azide and 50% glycerol pH 7.3.
Aliquoting is unnecessary for -20°C storage

For technical support and original validation data for this product please contact:

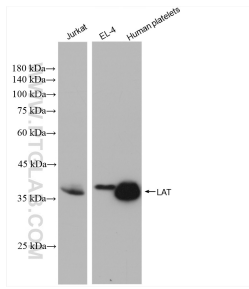
T: 4006900926

E: Proteintech-CN@ptglab.com

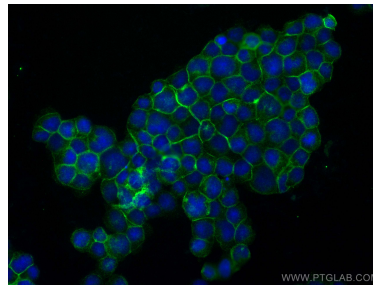
W: ptgcn.com

This product is exclusively available under Proteintech Group brand and is not available to purchase from any other manufacturer.

Selected Validation Data



Various lysates were subjected to SDS PAGE followed by western blot with 82901-1-RR (LAT antibody) at dilution of 1:2500 incubated at room temperature for 1.5 hours.



Immunofluorescent analysis of (4% PFA) fixed Jurkat cells using LAT antibody (82901-1-RR, Clone: 2P13) at dilution of 1:1500 and CoraLite® 488-Conjugated AffiniPure Goat Anti-Rabbit IgG(H+L) (SA00013-2).