

For Research Use Only

LAT Recombinant antibody, PBS Only

Catalog Number: 82901-1-PBS

Featured Product



Basic Information

Catalog Number:

82901-1-PBS

Concentration:

1mg/ml

Source:

Rabbit

Isotype:

IgG

GenBank Accession Number:

BC011563

GeneID (NCBI):

27040

UNIPROT ID:

O43561

Full Name:

linker for activation of T cells

Calculated MW:

262 aa, 28 kDa

Observed MW:

36-38 kDa

Purification Method:

Protein A purification

CloneNo.:

2P13

Applications

Tested Applications:

WB, IF/ICC, FC (Intra), Indirect ELISA

Species Specificity:

human, mouse

Background Information

LAT is a membrane-localized adaptor protein which is primarily concentrated in microdomains by palmitoylation. LAT plays a central role in T-cell activation by nucleating signaling complexes that are critical for the propagation of T-cell signals from the plasma membrane to the cellular interior. In addition to being a positive regulator of T cell signaling, LAT also recruits several negative regulatory proteins, including kinases, phosphatases, and ubiquitin ligases, which ultimately leads to signal termination. LAT is subject to ubiquitylation, and ubiquitin-resistant mutants of LAT display enhanced signaling.

Storage

Storage:

Store at -80°C.

The product is shipped with ice packs. Upon receipt, store it immediately at -80°C

Storage Buffer:

PBS Only

For technical support and original validation data for this product please contact:

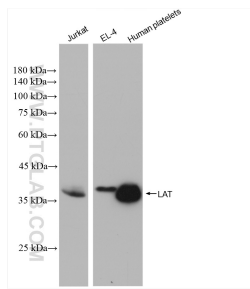
T: 4006900926

E: Proteintech-CN@ptglab.com

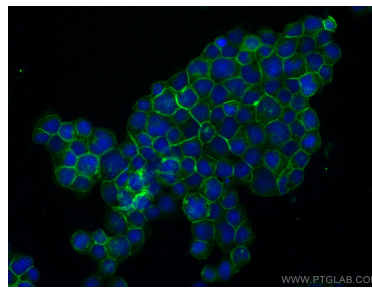
W: ptgcn.com

This product is exclusively available under Proteintech Group brand and is not available to purchase from any other manufacturer.

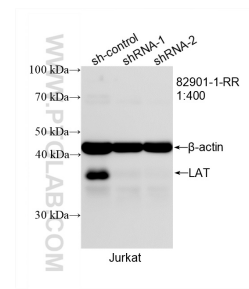
Selected Validation Data



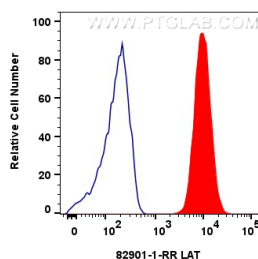
Various lysates were subjected to SDS PAGE followed by western blot with 82901-1-RR (LAT antibody) at dilution of 1:2500 incubated at room temperature for 1.5 hours. This data was developed using the same antibody clone with 82901-1-PBS in a different storage buffer formulation.



Immunofluorescent analysis of (4% PFA) fixed Jurkat cells using LAT antibody (82901-1-RR, Clone: 2P13) at dilution of 1:1500 and CoraLite®488-Conjugated AffiniPure Goat Anti-Rabbit IgG(H+L) (SA00013-2). This data was developed using the same antibody clone with 82901-1-PBS in a different storage buffer formulation.



WB result of LAT antibody (82901-1-RR; 1:400; incubated at room temperature for 1.5 hours) with sh-Control and sh-LAT transfected Jurkat cells. This data was developed using the same antibody clone with 82901-1-PBS in a different storage buffer formulation.



1x10⁶ Jurkat cells were intracellularly stained with 0.25 ug LAT Recombinant antibody (82901-1-RR, Clone:2P13) and CoraLite®488-Conjugated AffiniPure Goat Anti-Rabbit IgG(H+L) (SA00013-2) (red), or 0.25 ug Isotype Control (blue). Cells were fixed with 4% PFA and permeabilized with Flow Cytometry Perm Buffer (PF00011-C). This data was developed using the same antibody clone with 82901-1-PBS in a different storage buffer formulation.