

For Research Use Only

# Synaptophysin Recombinant antibody, PBS Only (Capture/Detector)

Catalog Number: 82900-4-PBS



## Basic Information

Catalog Number:

82900-4-PBS

Size:

1 mg/ml

Source:

Rabbit

Isotype:

IgG

Immunogen Catalog Number:

AG11781

GenBank Accession Number:

BC064550

GeneID (NCBI):

6855

UNIPROT ID:

P08247

Full Name:

synaptophysin

Calculated MW:

313 aa, 34 kDa

Purification Method:

Protein A purification

CloneNo.:

240162C3

## Applications

Tested Applications:

Cytometric bead array, Sandwich ELISA, Indirect ELISA,  
Sample test

Species Specificity:

human

## Background Information

### Storage

Storage:

Store at -80°C.

**The product is shipped with ice packs. Upon receipt, store it immediately at -80°C**

Storage Buffer:

PBS Only

For technical support and original validation data for this product please contact:

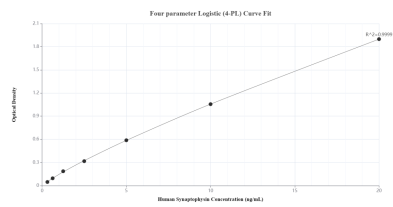
T: 4006900926

E: [Proteintech-CN@ptglab.com](mailto:Proteintech-CN@ptglab.com)

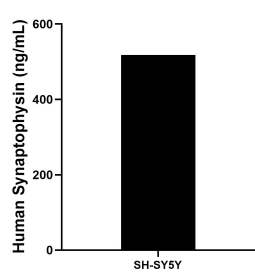
W: [ptgcn.com](http://ptgcn.com)

**This product is exclusively available under Proteintech Group brand and is not available to purchase from any other manufacturer.**

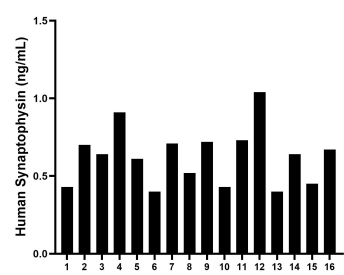
Selected Validation Data



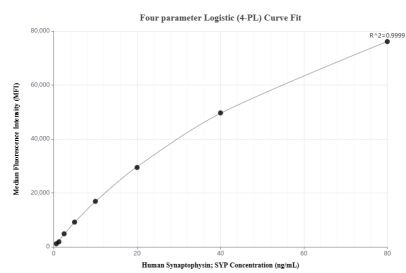
Sandwich ELISA standard curve of MP00345-4, Human Synaptophysin Recombinant Matched Antibody Pair - PBS only. 82900-8-PBS was coated to a plate as the capture antibody and incubated with serial dilutions of standard Ag11781. 82900-4-PBS was HRP conjugated as the detection antibody. Range: 0.313-20 ng/mL



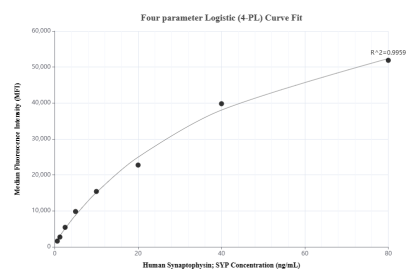
The mean Synaptophysin concentration was determined to be 518.35 ng/mL in SH-SY5Y cell extract based on a 2.2 mg/mL extract load.



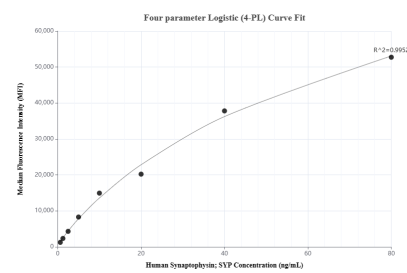
Serum of sixteen individual healthy human donors was measured. The Synaptophysin concentration of detected samples was determined to be 0.63 ng/mL with a range of 0.40 - 1.04 ng/mL



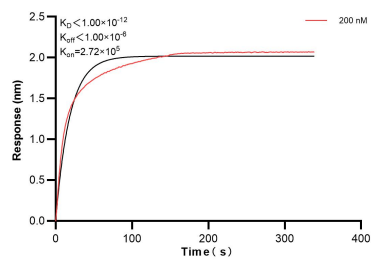
Cytometric bead array standard curve of MP00345-1, Synaptophysin Recombinant Matched Antibody Pair, PBS Only. Capture antibody: 82900-4-PBS. Detection antibody: 82900-2-PBS. Standard: Ag11781. Range: 0.625-80 ng/mL



Cytometric bead array standard curve of MP00345-2, Synaptophysin Recombinant Matched Antibody Pair, PBS Only. Capture antibody: 82900-5-PBS. Detection antibody: 82900-4-PBS. Standard: Ag11781. Range: 0.625-80 ng/mL



Cytometric bead array standard curve of MP00345-3, Synaptophysin Recombinant Matched Antibody Pair, PBS Only. Capture antibody: 82900-3-PBS. Detection antibody: 82900-4-PBS. Standard: Ag11781. Range: 0.625-80 ng/mL



Biolayer interferometry (BLI) kinetic assay of 82900-4-PBS against Human Synaptophysin was performed. The affinity constant is below 1 pM.