

For Research Use Only

# Synaptophysin Recombinant antibody, PBS Only

Catalog Number: 82900-1-PBS



## Basic Information

Catalog Number:

82900-1-PBS

Concentration:

1mg/ml

Source:

Rabbit

Isotype:

IgG

Immunogen Catalog Number:

AG11781

GenBank Accession Number:

BC064550

GeneID (NCBI):

6855

UNIPROT ID:

P08247

Full Name:

synaptophysin

Calculated MW:

313 aa, 34 kDa

Observed MW:

38-40 kDa

Purification Method:

Protein A purification

CloneNo.:

2H14

## Applications

Tested Applications:

WB, IHC, IF/ICC, IF-P, FC (Intra), IP, Indirect ELISA

Species Specificity:

human, mouse, rat

## Background Information

Synaptophysin (SYP, also known as major synaptic vesicle protein p38) is a 38-kDa integral membrane glycoprotein that regulates synaptic vesicle endocytosis. It is the most abundant synaptic vesicle protein by mass. Synaptophysin is present in neuroendocrine cells and neurons that participate in synaptic transmission. Synaptophysin is a useful marker for identification of neuroendocrine cells and neoplasms. (PMID: 3010302; 21658579)

## Storage

Storage:

Store at -80°C.

The product is shipped with ice packs. Upon receipt, store it immediately at -80°C

Storage Buffer:

PBS Only

For technical support and original validation data for this product please contact:

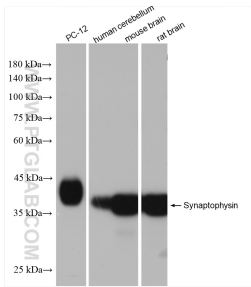
T: 4006900926

E: [Proteintech-CN@ptglab.com](mailto:Proteintech-CN@ptglab.com)

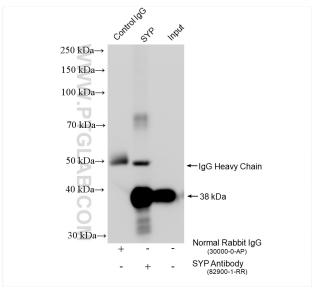
W: [ptgcn.com](http://ptgcn.com)

This product is exclusively available under Proteintech Group brand and is not available to purchase from any other manufacturer.

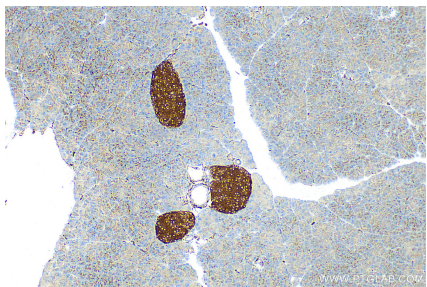
Selected Validation Data



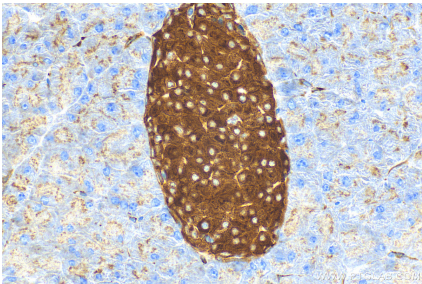
Various lysates were subjected to SDS PAGE followed by western blot with 82900-1-RR (Synaptophysin antibody) at dilution of 1:20000 incubated at room temperature for 1.5 hours. This data was developed using the same antibody clone with 82900-1-PBS in a different storage buffer formulation.



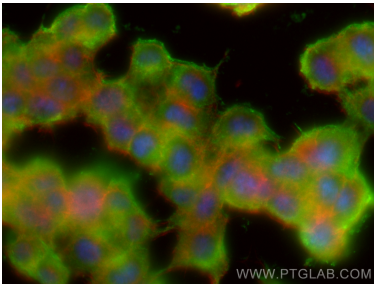
IP result of anti-Synaptophysin (IP: 82900-1-RR, 4ug; Detection: 82900-1-RR 1:5000) with mouse brain tissue lysate 1800 ug. This data was developed using the same antibody clone with 82900-1-PBS in a different storage buffer formulation.



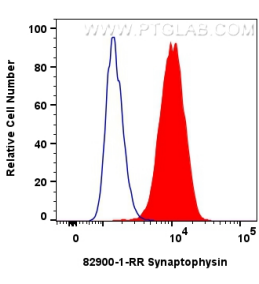
Immunohistochemical analysis of paraffin-embedded mouse pancreas tissue slide using 82900-1-RR (Synaptophysin antibody) at dilution of 1:1000 (under 10x lens). Heat mediated antigen retrieval with Tris-EDTA buffer (pH 9.0). This data was developed using the same antibody clone with 82900-1-PBS in a different storage buffer formulation.



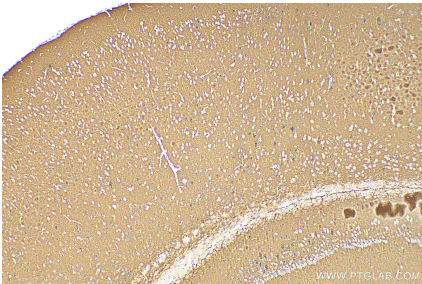
Immunohistochemical analysis of paraffin-embedded mouse pancreas tissue slide using 82900-1-RR (Synaptophysin antibody) at dilution of 1:1000 (under 40x lens). Heat mediated antigen retrieval with Tris-EDTA buffer (pH 9.0). This data was developed using the same antibody clone with 82900-1-PBS in a different storage buffer formulation.



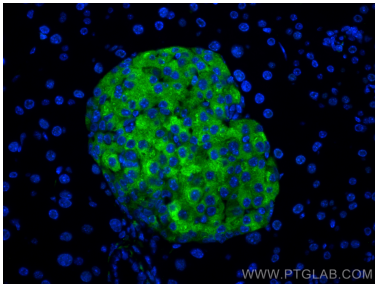
Immunofluorescent analysis of (-20°C Ethanol) fixed PC-12 cells using Synaptophysin antibody (82900-1-RR, Clone: 2H14) at dilution of 1:400 and Multi-rAb Coralite® Plus 488-Goat Anti-Rabbit Recombinant Secondary Antibody (H+L) (RGAR002), CL594-Phalloidin (red). This data was developed using the same antibody clone with 82900-1-PBS in a different storage buffer formulation.



1x10<sup>6</sup> A549 cells were intracellularly stained with 0.25 ug Synaptophysin Recombinant antibody (82900-1-RR, Clone: 2H14) and Coralite® 488-Conjugated AffiniPure Goat Anti-Rabbit IgG(H+L) (SA00013-2)(red), or 0.25 ug Isotype Control (blue). Cells were fixed and permeabilized with Transcription Factor Staining Buffer Kit (PF00011). This data was developed using the same antibody clone with 82900-1-PBS in a different storage buffer formulation.

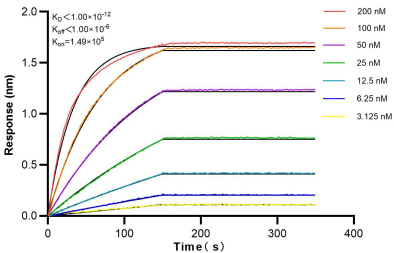


Immunofluorescent analysis of (4% PFA) fixed paraffin-embedded mouse pancreas tissue using Synaptophysin antibody (82900-1-RR, Clone: 2H14) at dilution of 1:400 and Coralite® 488-Conjugated Goat Anti-Rabbit IgG(H+L) (SA00013-2). Heat mediated antigen retrieval with Tris-EDTA buffer (pH 9.0). This data was developed using the same antibody clone with 82900-1-PBS in a different storage buffer formulation.



Immunofluorescent analysis of (4% PFA) fixed paraffin-embedded mouse pancreas tissue using Synaptophysin antibody (82900-1-RR, Clone: 2H14) at dilution of 1:400 and Coralite® 488-Conjugated Goat Anti-Rabbit IgG(H+L) (SA00013-2). Heat mediated antigen retrieval with Tris-EDTA buffer (pH 9.0). This data was developed using the same antibody clone with 82900-1-PBS in a different storage buffer formulation.

Immunohistochemical analysis of paraffin-embedded mouse brain tissue slide using 82900-1-RR (Synaptophysin antibody) at dilution of 1:1000 (under 10x lens). Heat mediated antigen retrieval with Tris-EDTA buffer (pH 9.0). This data was developed using the same antibody clone with 82900-1-PBS in a different storage buffer formulation.



Biolayer interferometry (BLI) kinetic assays of 82900-1-RR against Human Synaptophysin were performed. The affinity constant is below 1 pM.