

For Research Use Only

NSUN2 Recombinant antibody, PBS Only (Detector)

Catalog Number: 82894-1-PBS



Basic Information

Catalog Number: 82894-1-PBS	GenBank Accession Number: BC001041	Purification Method: Protein A purification
Size: 1mg/ml	GeneID (NCBI): 54888	CloneNo.: 230186A6
Source: Rabbit	UNIPROT ID: Q08J23	
Isotype: IgG	Full Name: NOL1/NOP2/Sun domain family, member 2	
Immunogen Catalog Number: AG14791	Calculated MW: 767 aa, 86 kDa	

Applications

Tested Applications:
IF/ICC, FC (Intra), Cytometric bead array, Sandwich
ELISA, Indirect ELISA, Sample test

Species Specificity:
human

Background Information

NSUN2, also known as SAKI or Misu (Myc-induced SUN-domain-containing protein), is a methyltransferase which catalyses (cytosine-5-)-methylation of tRNA. NSUN2 is direct target gene of c-Myc and may act downstream of Myc to regulate epidermal cell growth and proliferation. NSUN2 is overexpressed in various cancer tissues and may be a valuable target for cancer therapy and a cancer diagnostic marker. Recently a splicing mutation in NSUN2 has been identified as the cause of a Dubowitz-like syndrome, an autosomal recessive disorder.

Storage

Storage:
Store at -80°C.
The product is shipped with ice packs. Upon receipt, store it immediately at -80°C

Storage Buffer:
100% PBS pH 7.3

For technical support and original validation data for this product please contact:

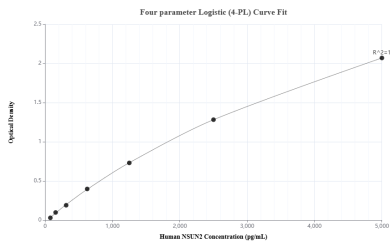
T: 4006900926

E: Proteintech-CN@ptglab.com

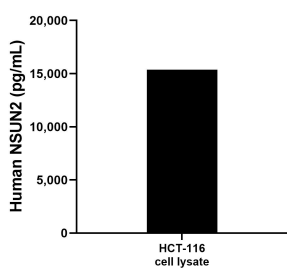
W: ptgcn.com

This product is exclusively available under Proteintech Group brand and is not available to purchase from any other manufacturer.

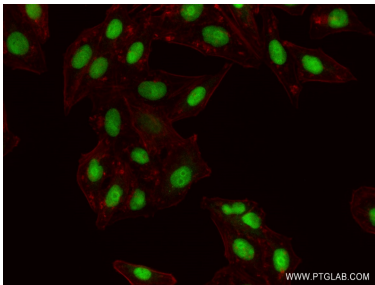
Selected Validation Data



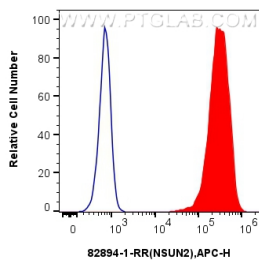
Sandwich ELISA standard curve of MP00112-3, Human NSUN2 Recombinant Matched Antibody Pair - PBS only. 82894-9-PBS was coated to a plate as the capture antibody and incubated with serial dilutions of standard Ag14791. 82894-1-PBS was HRP conjugated as the detection antibody. Range: 78.1-5000 pg/ml



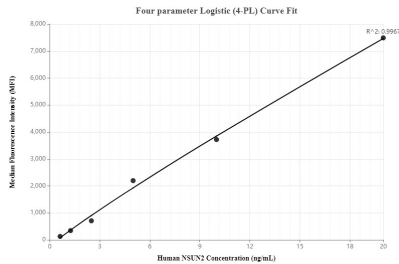
HCT-116 cell lysate was measured. The human NSUN2 concentration of detected samples was determined to be 15,374.1 pg/mL (based on a 3.0 mg/mL extract load).



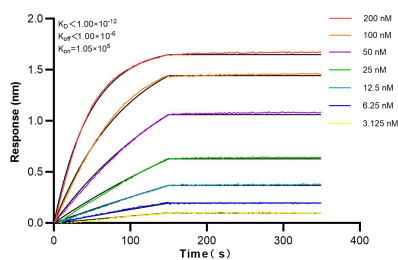
Immunofluorescent analysis of (4% PFA) fixed HepG2 cells using NSUN2 antibody (82894-1-RR, Clone: 230186A6) at dilution of 1:500 and CoraLite®488-Conjugated AffiniPure Goat Anti-Rabbit IgG(H+L) (SA00013-2), CL594-Phalloidin (red). This data was developed using the same antibody clone with 82894-1-PBS in a different storage buffer formulation.



1x10⁶ HeLa cells were intracellularly stained with 0.25 ug Anti-Human NSUN2 (82894-1-RR, Clone:230186A6) and APC-Conjugated AffiniPure Goat Anti-Rabbit IgG(H+L) at dilution 1:166 (red), or 0.25 ug Rabbit IgG control Rabbit PolyAb (30000-0-AP, Clone:) (blue). Cells were fixed and permeabilized with True-Nuclear Transcription Factor Buffer Set. This data was developed using the same antibody clone with 82894-1-PBS in a different storage buffer formulation.



Cytometric bead array standard curve of MP00112-1, NSUN2 Recombinant Matched Antibody Pair, PBS Only. Capture antibody: 82894-4-PBS. Detection antibody: 82894-1-PBS. Standard: Ag14791. Range: 0.625-20 ng/mL



Bilayer interferometry (BLI) kinetic assays of 82894-1-RR against Human NSUN2 were performed. The affinity constant is below 1 pM.