

For Research Use Only

# MELK Recombinant antibody, PBS Only (Detector)

Catalog Number: 82893-6-PBS



## Basic Information

Catalog Number:

82893-6-PBS

Concentration:

1 mg/ml

Source:

Rabbit

Isotype:

IgG

Immunogen Catalog Number:

AG1897

GenBank Accession Number:

BC014039

GeneID (NCBI):

9833

UNIPROT ID:

Q14680

Full Name:

maternal embryonic leucine zipper kinase

Calculated MW:

651 aa, 75 kDa

Purification Method:

Protein A purification

CloneNo.:

230106E8

## Applications

Tested Applications:

Sandwich ELISA, Indirect ELISA, Sample test

Species Specificity:

human

## Background Information

### Storage

Storage:

Store at -80°C.

The product is shipped with ice packs. Upon receipt, store it immediately at -80°C

Storage Buffer:

PBS Only

For technical support and original validation data for this product please contact:

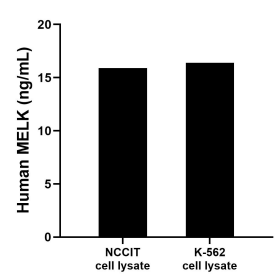
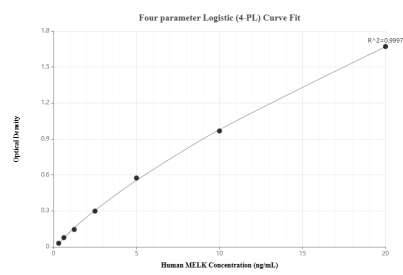
T: 4006900926

E: Proteintech-CN@ptglab.com

W: ptgcn.com

This product is exclusively available under Proteintech Group brand and is not available to purchase from any other manufacturer.

## Selected Validation Data



Sandwich ELISA standard curve of MP00075-4, Human MELK Recombinant Matched Antibody Pair - PBS only. 82893-2-PBS was coated to a plate as the capture antibody and incubated with serial dilutions of standard Ag1897. 82893-6-PBS was HRP conjugated as the detection antibody. Range: 0.313-20 ng/mL

NCCIT and K-562 cell lysate were measured. The human MELK concentration of detected samples was determined to be 15.9 ng/mL (based on a 4.5 mg/mL extract load) in NCCIT cell lysate and 16.4 ng/mL (based on a 4.5 mg/mL extract load) in K-562 cell lysate.