

For Research Use Only

MELK Recombinant antibody, PBS Only

Catalog Number: 82893-1-PBS



Basic Information

Catalog Number:

82893-1-PBS

Size:

1 mg/ml

Source:

Rabbit

Isotype:

IgG

Immunogen Catalog Number:

AG1897

GenBank Accession Number:

BC014039

GeneID (NCBI):

9833

UNIPROT ID:

Q14680

Full Name:

maternal embryonic leucine zipper kinase

Calculated MW:

651 aa, 75 kDa

Purification Method:

Protein A purification

CloneNo.:

230106D4

Applications

Tested Applications:

FC (Intra), Indirect ELISA

Species Specificity:

human

Background Information

MELK is involved in various processes such as cell cycle regulation, self-renewal of stem cells, apoptosis and splicing regulation. It also plays a key role in cell proliferation and carcinogenesis, and it is required for proliferation of embryonic and postnatal multipotent neural progenitors.

Storage

Storage:

Store at -80°C.

The product is shipped with ice packs. Upon receipt, store it immediately at -80°C

Storage Buffer:

PBS Only

For technical support and original validation data for this product please contact:

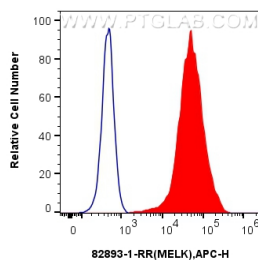
T: 4006900926

E: Proteintech-CN@ptglab.com

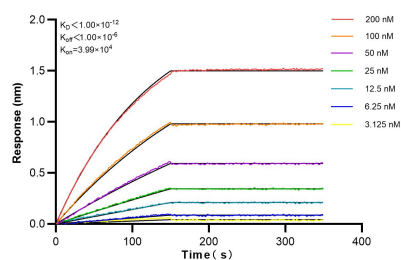
W: ptgcn.com

This product is exclusively available under Proteintech Group brand and is not available to purchase from any other manufacturer.

Selected Validation Data



1x10⁶ MCF-7 cells were intracellularly stained with 0.5 ug Anti-Human MELK (82893-1-RR, Clone:230106D4) and APC-Conjugated AffiniPure Goat Anti-Rabbit IgG(H+L) at dilution 1:166 (red), or 0.5 ug Rabbit IgG control Rabbit PolyAb (30000-O-AP, Clone:) (blue). Cells were fixed with 4% PFA and permeabilized with Flow Cytometry Perm Buffer (PF00011-C). This data was developed using the same antibody clone with 82893-1-PBS in a different storage buffer formulation.



Biolayer interferometry (BLI) kinetic assays of 82893-1-RR against Human MELK were performed. The affinity constant is below 1 pM.