

RRBP1 Recombinant antibody

Catalog Number: 82890-3-RR

Basic Information

Catalog Number:	82890-3-RR	GenBank Accession Number:	BC128577	Purification Method:	Protein A purification
Size:	1000 ug/ml	GeneID (NCBI):	6238	CloneNo.:	230159G10
Source:	Rabbit	UNIPROT ID:	Q9P2E9	Recommended Dilutions:	WB 1:5000-1:50000 IHC 1:500-1:2000 IF/ICC 1:125-1:500
Isotype:	IgG	Full Name:	ribosome binding protein 1 homolog 180kDa (dog)		
Immunogen Catalog Number:	AG16648	Calculated MW:	1410 aa, 152 kDa		
		Observed MW:	180 kDa		

Applications

Tested Applications:	WB, IHC, IF/ICC, FC (Intra), ELISA	Positive Controls:	
Species Specificity:	human	WB :	HeLa cells, NCI-H1299 cells
Note-IHC: suggested antigen retrieval with TE buffer pH 9.0; (*) Alternatively, antigen retrieval may be performed with citrate buffer pH 6.0		IHC :	human stomach cancer tissue,
		IF/ICC :	HeLa cells,

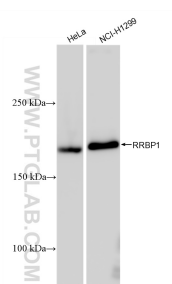
Background Information

Ribosome-binding protein 1 (RRBP1) is an endoplasmic reticulum membrane protein. It is a 1410 amino acid protein composed of a hydrophobic NH2-terminus that includes a transmembrane domain, a highly conserved tandem repeat (ribosome-binding domain), and an acidic coiled-coil COOH-terminal domain. RRBP1 acts as a ribosome receptor and mediates interaction between the ribosome and the endoplasmic reticulum membrane. It is also involved in early cardiac morphogenesis (PMID: 22709790; 8812507; 7686155). RRBP1 has two different isoforms with molecular weights of 150 kDa and 109 kDa.

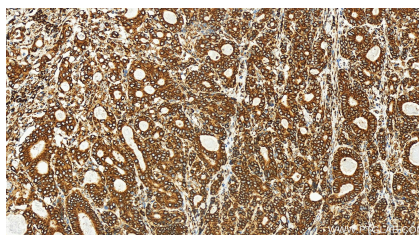
Storage

Storage:
Store at -20°C. Stable for one year after shipment.
Storage Buffer:
PBS with 0.02% sodium azide and 50% glycerol pH 7.3.
Aliquoting is unnecessary for -20°C storage

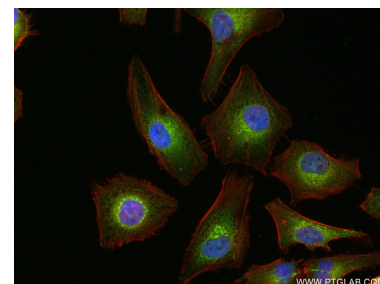
Selected Validation Data



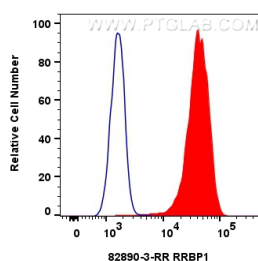
Various lysates were subjected to SDS PAGE followed by western blot with 82890-3-RR (RRBP1 antibody) at dilution of 1:10000 incubated at room temperature for 1.5 hours.



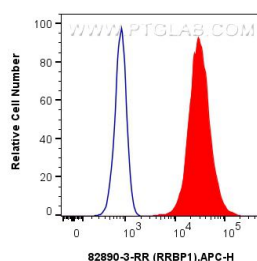
Immunohistochemical analysis of paraffin-embedded human stomach cancer tissue slide using 82890-3-RR (RRBP1 antibody) at dilution of 1:1000 (under 20x lens). Heat mediated antigen retrieval with Tris-EDTA buffer(pH9).



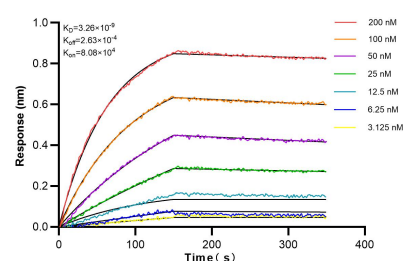
Immunofluorescent analysis of (4% PFA) fixed HeLa cells using RRBP1 antibody (82890-3-RR, Clone: 230159G10) at dilution of 1:250 and Coralite®488-Conjugated AffiniPure Goat Anti-Rabbit IgG(H+L) (SA00013-2), CL594-Phalloidin (red).



1x10⁶ HeLa cells were intracellularly stained with 0.25 ug RRBP1 Recombinant antibody (82890-3-RR, Clone:230159G10) and Coralite®488-Conjugated AffiniPure Goat Anti-Rabbit IgG(H+L) (SA00013-2) (red), or 0.25 ug Isotype Control (blue). Cells were fixed with 4% PFA and permeabilized with Flow Cytometry Perm Buffer (PF00011-C).



1x10⁶ U-2 OS were intracellularly stained with 0.25 ug RRBP1 Recombinant antibody (82890-3-RR, Clone:230159G10) and APC-Conjugated Goat Anti-Rabbit IgG(H+L)(red), or 0.25 ug Rabbit IgG Isotype Control Recombinant Antibody (98136-1-RR, Clone: 240953C9) (blue). Cells were fixed with 4% PFA and permeabilized with Flow Cytometry Perm Buffer (PF00011-C).



Bi-layer interferometry (BLI) kinetic assays of 82890-3-RR against Human RRBP1 were performed. The affinity constant is 3.26 nM.