

For Research Use Only

# RRBP1 Recombinant antibody

Catalog Number: 82890-2-RR



## Basic Information

<b>Catalog Number:</b> 82890-2-RR	<b>GenBank Accession Number:</b> BC128577	<b>Purification Method:</b> Protein A purification
<b>Size:</b> 1000 ug/ml	<b>GeneID (NCBI):</b> 6238	<b>CloneNo.:</b> 230159G12
<b>Source:</b> Rabbit	<b>UNIPROT ID:</b> Q9P2E9	<b>Recommended Dilutions:</b> IHC 1:250-1:1000 IF/ICC 1:250-1:1000
<b>Isotype:</b> IgG	<b>Full Name:</b> ribosome binding protein 1 homolog 180kDa (dog)	
<b>Immunogen Catalog Number:</b> AG16648	<b>Calculated MW:</b> 1410 aa, 152 kDa	
	<b>Observed MW:</b> 108 kDa, 152 kDa	

## Applications

<b>Tested Applications:</b> IHC, IF/ICC, FC (Intra), ELISA	<b>Positive Controls:</b> IHC : human stomach cancer tissue, IF/ICC : HepG2 cells,
<b>Species Specificity:</b> human	
<b>Note-IHC: suggested antigen retrieval with TE buffer pH 9.0; (*) Alternatively, antigen retrieval may be performed with citrate buffer pH 6.0</b>	

## Background Information

Ribosome-binding protein 1 (RRBP1) is an endoplasmic reticulum membrane protein. It is a 1410 amino acid protein composed of a hydrophobic NH2-terminus that includes a transmembrane domain, a highly conserved tandem repeat (ribosome-binding domain), and an acidic coiled-coil COOH-terminal domain. RRBP1 acts as a ribosome receptor and mediates interaction between the ribosome and the endoplasmic reticulum membrane. It is also involved in early cardiac morphogenesis. (PMID: 22709790; 8812507; 7686155)

## Storage

**Storage:**  
Store at -20°C. Stable for one year after shipment.  
**Storage Buffer:**  
PBS with 0.02% sodium azide and 50% glycerol pH 7.3.  
Aliquoting is unnecessary for -20°C storage

For technical support and original validation data for this product please contact:

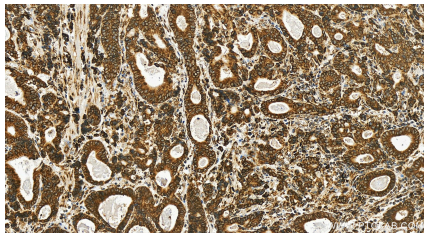
T: 4006900926

E: Proteintech-CN@ptglab.com

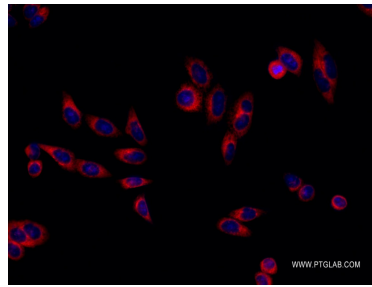
W: ptgcn.com

This product is exclusively available under Proteintech Group brand and is not available to purchase from any other manufacturer.

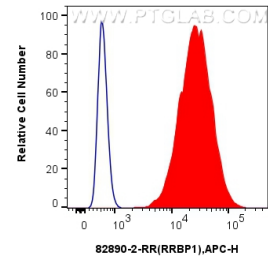
## Selected Validation Data



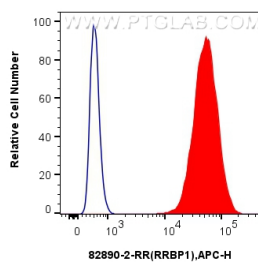
Immunohistochemical analysis of paraffin-embedded human stomach cancer tissue slide using 82890-2-RR (RRBP1 antibody) at dilution of 1:500 (under 20x lens). Heat mediated antigen retrieval with Tris-EDTA buffer(pH9).



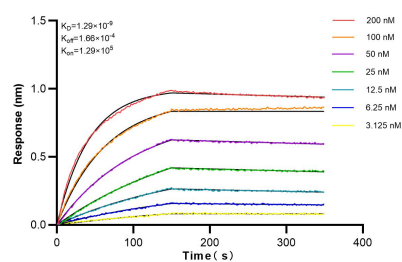
Immunofluorescent analysis of (-20°C Methanol) fixed HepG2 cells using RRBP1 antibody (82890-2-RR, Clone: 230159G12) at dilution of 1:500 and Multi-rAb CoraLite® Plus 594-Goat Anti-Rabbit Recombinant Secondary Antibody (H+L) (RGAR004).



1x10<sup>6</sup> A549 cells were intracellularly stained with 0.25 ug Anti-Human RRBP1 (82890-2-RR, Clone:230159G12) and APC-Conjugated AffiniPure Goat Anti-Rabbit IgG(H+L)(red), or 0.25 ug Rabbit IgG control Rabbit PolyAb (30000-0-AP) (blue). Cells were fixed with 4% PFA and permeabilized with Flow Cytometry Perm Buffer (PF00011-C).



1x10<sup>6</sup> U2OS cells were intracellularly stained with 0.25 ug Anti-Human RRBP1 (82890-2-RR, Clone:230159G12) and APC-Conjugated AffiniPure Goat Anti-Rabbit IgG(H+L)(red), or 0.25 ug Rabbit IgG control Rabbit PolyAb (30000-0-AP) (blue). Cells were fixed with 4% PFA and permeabilized with Flow Cytometry Perm Buffer (PF00011-C).



Biolayer interferometry (BLI) kinetic assays of 82890-2-RR against Human RRBP1 were performed. The affinity constant is 1.29 nM.