

RRBP1 Recombinant antibody

Catalog Number: 82890-1-RR

Basic Information

Catalog Number:

82890-1-RR

Size:

1000 µg/ml

Source:

Rabbit

Isotype:

IgG

Immunogen Catalog Number:

AG16648

GenBank Accession Number:

BC128577

GeneID (NCBI):

6238

UNIPROT ID:

Q9P2E9

Full Name:ribosome binding protein 1 homolog
180kDa (dog)**Calculated MW:**

1410 aa, 152 kDa

Observed MW:

108 kDa, 152 kDa

Purification Method:

Protein A purification

CloneNo.:

230159G6

Recommended Dilutions:

IF/ICC 1:500-1:2000

Applications

Tested Applications:

IF/ICC, FC (Intra), ELISA

Species Specificity:

human, mouse

Positive Controls:

IF/ICC : NIH/3T3 cells, HeLa cells

Background Information

Ribosome-binding protein 1 (RRBP1) is an endoplasmic reticulum membrane protein. It is a 1410 amino acid protein composed of a hydrophobic NH₂-terminus that includes a transmembrane domain, a highly conserved tandem repeat (ribosome-binding domain), and an acidic coiled-coil COOH-terminal domain. RRBP1 acts as a ribosome receptor and mediates interaction between the ribosome and the endoplasmic reticulum membrane. It is also involved in early cardiac morphogenesis. (PMID: 22709790; 8812507; 7686155)

Storage

Storage:

Store at -20°C. Stable for one year after shipment.

Storage Buffer:

PBS with 0.02% sodium azide and 50% glycerol pH 7.3.

Aliquoting is unnecessary for -20°C storage

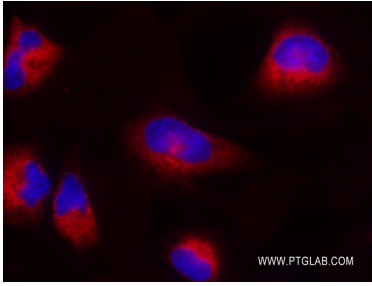
For technical support and original validation data for this product please contact:

T: 4006900926

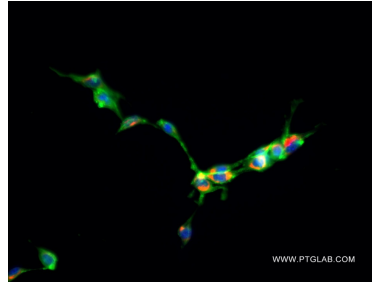
E: Proteintech-CN@ptglab.comW: ptgcn.com

This product is exclusively available under Proteintech Group brand and is not available to purchase from any other manufacturer.

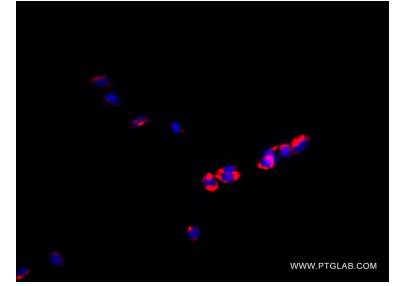
Selected Validation Data



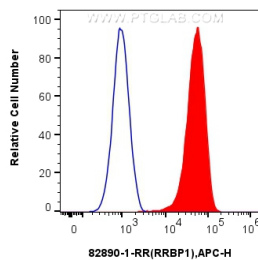
Immunofluorescent analysis of (4% PFA) fixed HeLa cells using RRBP1 antibody (82890-1-RR, Clone: 230159G6) at dilution of 1:1000 and Multi-rAb CoraLite® Plus 594-Goat Anti-Mouse Recombinant Secondary Antibody (H+L) (RGAM004).



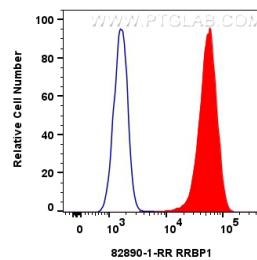
Immunofluorescent analysis of (4% PFA) fixed NIH/3T3 cells using RRBP1 antibody (82890-1-RR, Clone: 230159G6) at dilution of 1:1000 and Multi-rAb CoraLite® Plus 594-Goat Anti-Mouse Recombinant Secondary Antibody (H+L) (RGAM004). (CL488-Phalloidin, green).



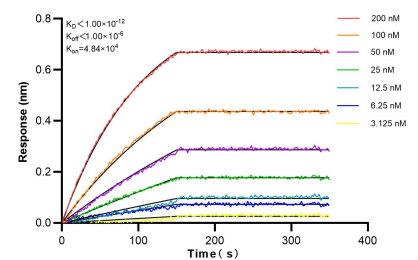
Immunofluorescent analysis of (4% PFA) fixed NIH/3T3 cells using RRBP1 antibody (82890-1-RR, Clone: 230159G6) at dilution of 1:1000 and Multi-rAb CoraLite® Plus 594-Goat Anti-Mouse Recombinant Secondary Antibody (H+L) (RGAM004).



(blue) 1×10^6 U-2 OS were intracellularly stained with 0.25 μ g Anti-Human RRBP1 (82890-1-RR, Clone: 230159G6) and Alexa Fluor™ Plus 647-Conjugated AffiniPure Goat Anti-Rabbit IgG(H+L) at dilution 1:166 (red), or 0.25 μ g Rabbit IgG control Rabbit PolyAb (30000-0-AP). Cells were fixed with 4% PFA and permeabilized with Flow Cytometry Perm Buffer (PF00011-C).



1×10^6 HeLa cells were intracellularly stained with 0.25 μ g RRBP1 Recombinant antibody (82890-1-RR, Clone: 230159G6) and CoraLite® 488-Conjugated AffiniPure Goat Anti-Rabbit IgG(H+L) (SA00013-2) (red), or 0.25 μ g Isotype Control (blue). Cells were fixed with 4% PFA and permeabilized with Flow Cytometry Perm Buffer (PF00011-C).



Bi-layer interferometry (BLI) kinetic assays of 82890-1-RR against Human RRBP1 were performed. The affinity constant is below 1 pM.