

RRBP1 Recombinant antibody, PBS Only

Catalog Number: 82890-1-PBS

Basic Information

Catalog Number: 82890-1-PBS	GenBank Accession Number: BC128577	Purification Method: Protein A purification
Size: 1mg/ml	GeneID (NCBI): 6238	CloneNo.: 230159G6
Source: Rabbit	UNIPROT ID: Q9P2E9	
Isotype: IgG	Full Name: ribosome binding protein 1 homolog 180kDa (dog)	
Immunogen Catalog Number: AG16648	Calculated MW: 1410 aa, 152 kDa	
	Observed MW: 108 kDa, 152 kDa	

Applications

Tested Applications:
Indirect ELISA, IF/ICC

Species Specificity:
mouse, human

Background Information

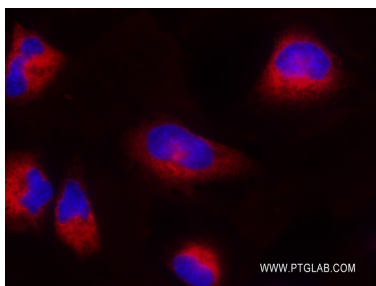
Ribosome-binding protein 1 (RRBP1) is an endoplasmic reticulum membrane protein. It is a 1410 amino acid protein composed of a hydrophobic NH₂-terminus that includes a transmembrane domain, a highly conserved tandem repeat (ribosome-binding domain), and an acidic coiled-coil COOH-terminal domain. RRBP1 acts as a ribosome receptor and mediates interaction between the ribosome and the endoplasmic reticulum membrane. It is also involved in early cardiac morphogenesis. (PMID: 22709790; 8812507; 7686155)

Storage

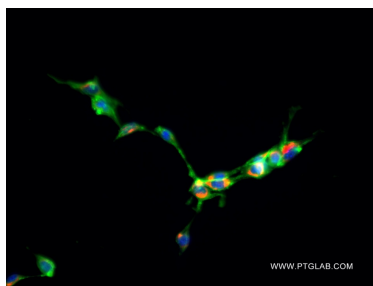
Storage:
Store at -80°C.
The product is shipped with ice packs. Upon receipt, store it immediately at -80°C

Storage Buffer:
PBS Only

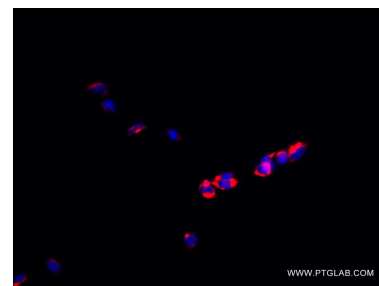
Selected Validation Data



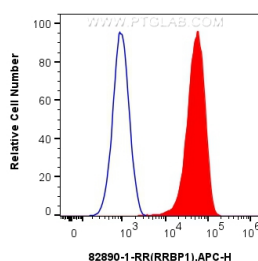
Immunofluorescent analysis of (4% PFA) fixed HeLa cells using RRBP1 antibody (82890-1-RR, Clone: 230159G6) at dilution of 1:1000 and Multi-rAb CoraLite® Plus 594-Goat Anti-Mouse Recombinant Secondary Antibody (H+L) (RGAM004). This data was developed using the same antibody clone with 82890-1-PBS in a different storage buffer formulation.



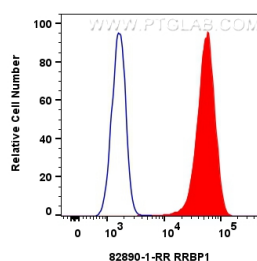
Immunofluorescent analysis of (4% PFA) fixed NIH/3T3 cells using RRBP1 antibody (82890-1-RR, Clone: 230159G6) at dilution of 1:1000 and Multi-rAb CoraLite® Plus 594-Goat Anti-Mouse Recombinant Secondary Antibody (H+L) (RGAM004). (CL488-Phalloidin, green). This data was developed using the same antibody clone with 82890-1-PBS in a different storage buffer formulation.



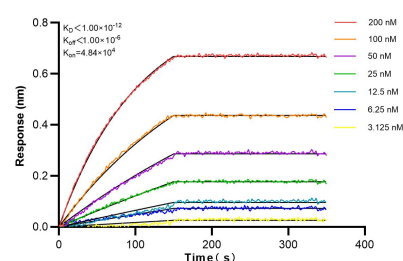
Immunofluorescent analysis of (4% PFA) fixed NIH/3T3 cells using RRBP1 antibody (82890-1-RR, Clone: 230159G6) at dilution of 1:1000 and Multi-rAb CoraLite® Plus 594-Goat Anti-Mouse Recombinant Secondary Antibody (H+L) (RGAM004). This data was developed using the same antibody clone with 82890-1-PBS in a different storage buffer formulation.



(blue) 1×10^6 U-2 OS were intracellularly stained with 0.25 μ g Anti-Human RRBP1 (82890-1-RR, Clone: 230159G6) and Alexa Fluor™ Plus 647-Conjugated AffiniPure Goat Anti-Rabbit IgG(H+L) at dilution 1:166 (red), or 0.25 μ g Rabbit IgG control Rabbit PolyAb (30000-O-AP). Cells were fixed with 4% PFA and permeabilized with Flow Cytometry Perm Buffer (PF00011-C). This data was developed using the same antibody clone with 82890-1-PBS in a different storage buffer formulation.



1×10^6 HeLa cells were intracellularly stained with 0.25 μ g RRBP1 Recombinant antibody (82890-1-RR, Clone: 230159G6) and CoraLite® 488-Conjugated AffiniPure Goat Anti-Rabbit IgG(H+L) (SA00013-2) (red), or 0.25 μ g Isotype Control (blue). Cells were fixed with 4% PFA and permeabilized with Flow Cytometry Perm Buffer (PF00011-C). This data was developed using the same antibody clone with 82890-1-PBS in a different storage buffer formulation.



Bi-layer interferometry (BLI) kinetic assays of 82890-1-RR against Human RRBP1 were performed. The affinity constant is below 1 pM.