

For Research Use Only

Emerin Recombinant monoclonal antibody

Catalog Number: 82888-3-RR

Featured Product



Basic Information

Catalog Number:

82888-3-RR

Source:

Rabbit

Isotype:

IgG

Immunogen Catalog Number:

AG0236

GenBank Accession Number:

BC000738

GeneID (NCBI):

2010

UNIPROT ID:

P50402

Full Name:

emerin

Calculated MW:

34 kDa

Observed MW:

35 kDa

Purification Method:

Protein A purification

CloneNo.:

230089B12

Recommended Dilutions:

WB: 1:5000-1:50000

IHC: 1:200-1:800

FC (Intra): 0.20 ug per 10⁶ cells in a 100 µl suspension

Applications

Tested Applications:

WB, IHC, FC (Intra), ELISA

Species Specificity:

human

Note-IHC: suggested antigen retrieval with TE buffer pH 9.0; (*) Alternatively, antigen retrieval may be performed with citrate buffer pH 6.0

Positive Controls:

WB : HEK-293 cells, HeLa cells, Jurkat cells

IHC : human stomach cancer tissue,

FC (Intra) : HeLa cells,

Background Information

Storage

Storage:

Store at -20°C. Stable for one year after shipment.

Storage Buffer:

PBS with 0.02% sodium azide and 50% glycerol, pH7.3

Aliquoting is unnecessary for -20°C storage

For technical support and original validation data for this product please contact:

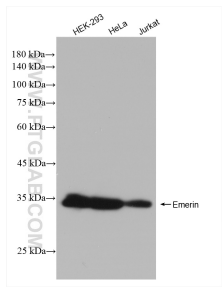
T: 4006900926

E: Proteintech-CN@ptglab.com

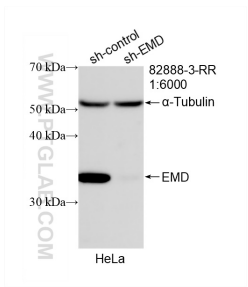
W: ptgcn.com

This product is exclusively available under Proteintech Group brand and is not available to purchase from any other manufacturer.

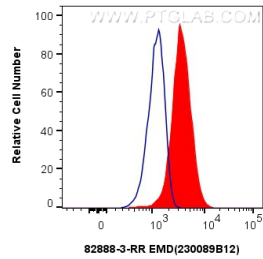
Selected Validation Data



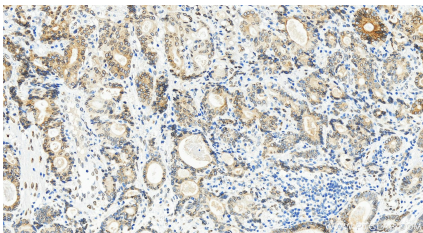
Various lysates were subjected to SDS PAGE followed by western blot with 82888-3-RR (Emerin antibody) at dilution of 1:10000 incubated at room temperature for 1.5 hours.



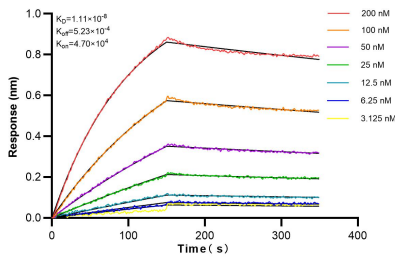
WB result of Emerin antibody (82888-3-RR; 1:6000; incubated at room temperature for 1.5 hours) with sh-Control and sh-Emerin transfected HeLa cells.



1x10⁶ HeLa cells were intracellularly stained with 0.2 ug EMD Recombinant antibody (82888-3-RR, Clone:230089B12) and CoraLite®488-Conjugated AffiniPure Goat Anti-Rabbit IgG(H+L) (SA00013-2) (red), or 0.2 ug rabbit IgG isotype control (blue). Cells were fixed with 4% PFA and permeabilized with Flow Cytometry Perm Buffer.



Immunohistochemical analysis of paraffin-embedded human stomach cancer tissue slide using 82888-3-RR (Emerin antibody) at dilution of 1:400 (under 20x lens). Heat mediated antigen retrieval with Tris-EDTA buffer(pH9).



Biolayer interferometry (BLI) kinetic assays of 82888-3-RR against Human EMD were performed. The affinity constant is 11.1 nM.