

# Emerin Recombinant antibody

Catalog Number: 82888-2-RR

## Basic Information

Catalog Number:	82888-2-RR	GenBank Accession Number:	BC000738	Purification Method:	Protein A purification
Size:	1000 µg/ml	GeneID (NCBI):	2010	CloneNo.:	230089C4
Source:	Rabbit	UNIPROT ID:	P50402	Recommended Dilutions:	IHC 1:200-1:800 IF/ICC 1:150-1:600
Isotype:	IgG	Full Name:	emerin		
Immunogen Catalog Number:	AG0236	Calculated MW:	34 kDa		

## Applications

Tested Applications:	IHC, IF/ICC, FC (Intra), ELISA	Positive Controls:	
Species Specificity:	human	IHC :	human thyroid cancer tissue,
		IF/ICC :	HeLa cells,

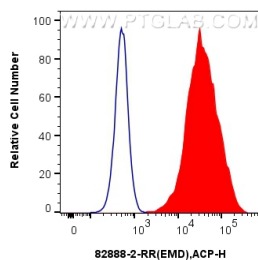
**Note-IHC: suggested antigen retrieval with TE buffer pH 9.0; (\*) Alternatively, antigen retrieval may be performed with citrate buffer pH 6.0**

## Background Information

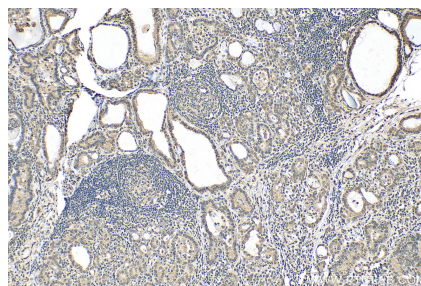
### Storage

**Storage:**  
Store at -20°C. Stable for one year after shipment.  
**Storage Buffer:**  
PBS with 0.02% sodium azide and 50% glycerol pH 7.3.  
Aliquoting is unnecessary for -20°C storage

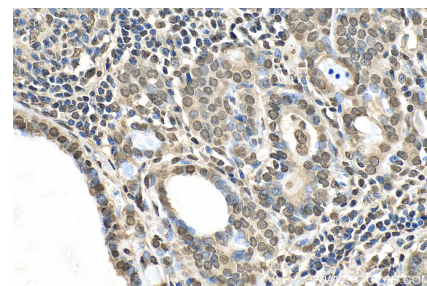
## Selected Validation Data



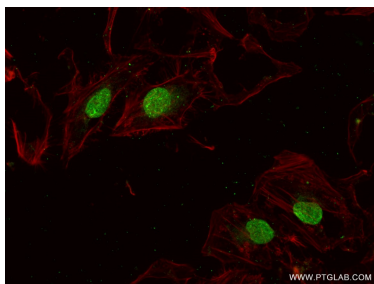
1x10<sup>6</sup> HeLa cells were intracellularly stained with 0.13 ug Anti-Human Emerin (82888-2-RR, Clone:230089C4) and APC-Conjugated AffiniPure Goat Anti-Rabbit IgG(H+L) at dilution 1:166 (red), or 0.13 ug Rabbit IgG control Rabbit PolyAb (30000-O-AP, Clone: ) (blue). Cells were fixed with 4% PFA and permeabilized with Flow Cytometry Perm Buffer (PF00011-C).



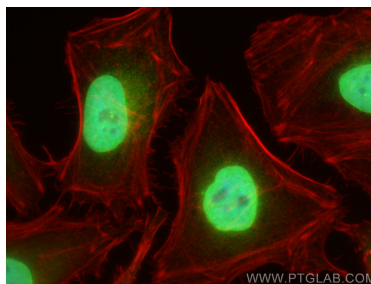
Immunohistochemical analysis of paraffin-embedded human thyroid cancer tissue slide using 82888-2-RR (Emerin antibody) at dilution of 1:400 (under 10x lens). Heat mediated antigen retrieval with Tris-EDTA buffer (pH 9.0).



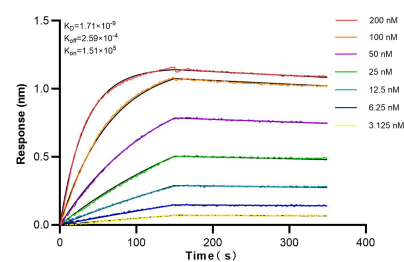
Immunohistochemical analysis of paraffin-embedded human thyroid cancer tissue slide using 82888-2-RR (Emerin antibody) at dilution of 1:400 (under 40x lens). Heat mediated antigen retrieval with Tris-EDTA buffer (pH 9.0).



Immunofluorescent analysis of (4% PFA) fixed HeLa cells using Emerin antibody (82888-2-RR, Clone: 230089C4) at dilution of 1:300 and CoraLite® 488-Conjugated AffiniPure Goat Anti-Rabbit IgG(H+L) (SA00013-2), CL594-Phalloidin (red).



Immunofluorescent analysis of (4% PFA) fixed HeLa cells using Emerin antibody (82888-2-RR, Clone: 230089C4) at dilution of 1:800 and Multi-rAb CoraLite® Plus 488-Goat Anti-Rabbit Recombinant Secondary Antibody (H+L) (RGAR002), CL594-phalloidin (red).



Bilayer interferometry (BLI) kinetic assays of 82888-2-RR against Human Emerin were performed. The affinity constant is 1.71 nM.