

For Research Use Only

# Emerin Recombinant monoclonal antibody, PBS Only

Catalog Number: 82888-2-PBS



## Basic Information

Catalog Number:

82888-2-PBS

Source:

Rabbit

Isotype:

IgG

Immunogen Catalog Number:

AG0236

GenBank Accession Number:

BC000738

GeneID (NCBI):

2010

UNIPROT ID:

P50402

Full Name:

emerin

Calculated MW:

34 kDa

Purification Method:

Protein A purification

CloneNo.:

230089C4

## Applications

Tested Applications:

IHC, IF/ICC, FC (Intra), Indirect ELISA

Species Specificity:

human

## Background Information

### Storage

Storage:

Store at -80°C.

The product is shipped with ice packs. Upon receipt, store it immediately at -80°C

Storage Buffer:

PBS only, pH7.3

For technical support and original validation data for this product please contact:

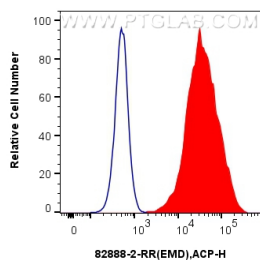
T: 4006900926

E: [Proteintech-CN@ptglab.com](mailto:Proteintech-CN@ptglab.com)

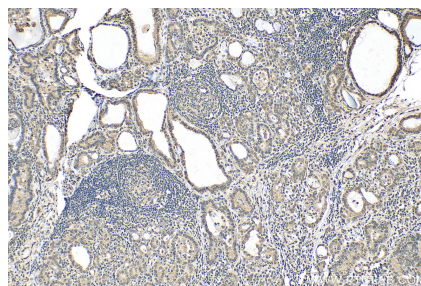
W: [ptgcn.com](http://ptgcn.com)

This product is exclusively available under Proteintech Group brand and is not available to purchase from any other manufacturer.

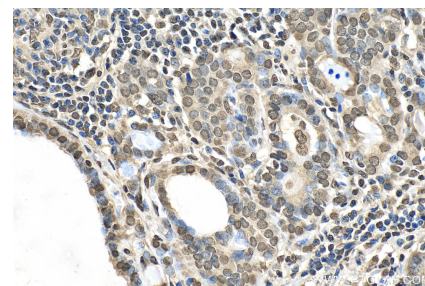
## Selected Validation Data



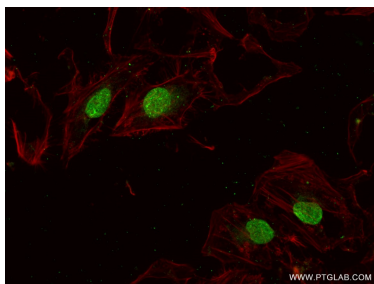
1x10<sup>6</sup> HeLa cells were intracellularly stained with 0.13 ug Anti-Human Emerin (82888-2-RR, Clone:230089C4) and APC-Conjugated AffiniPure Goat Anti-Rabbit IgG(H+L) at dilution 1:166 (red), or 0.13 ug rabbit IgG isotype control (blue). Cells were fixed with 4% PFA and permeabilized with Flow Cytometry Perm Buffer. This data was developed using the same antibody clone with 82888-2-PBS in a different storage buffer formulation.



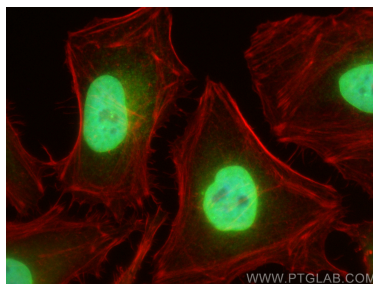
Immunohistochemical analysis of paraffin-embedded human thyroid cancer tissue slide using 82888-2-RR (Emerin antibody) at dilution of 1:400 (under 10x lens). Heat mediated antigen retrieval with Tris-EDTA buffer (pH 9.0). This data was developed using the same antibody clone with 82888-2-PBS in a different storage buffer formulation.



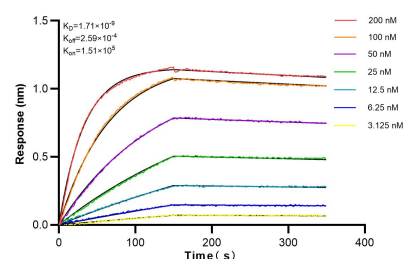
Immunohistochemical analysis of paraffin-embedded human thyroid cancer tissue slide using 82888-2-RR (Emerin antibody) at dilution of 1:400 (under 40x lens). Heat mediated antigen retrieval with Tris-EDTA buffer (pH 9.0). This data was developed using the same antibody clone with 82888-2-PBS in a different storage buffer formulation.



Immunofluorescent analysis of (4% PFA) fixed HeLa cells using Emerin antibody (82888-2-RR, Clone: 230089C4) at dilution of 1:300 and CoraLite®488-Conjugated AffiniPure Goat Anti-Rabbit IgG(H+L) (SA00013-2), CL594-Phalloidin (red). This data was developed using the same antibody clone with 82888-2-PBS in a different storage buffer formulation.



Immunofluorescent analysis of (4% PFA) fixed HeLa cells using Emerin antibody (82888-2-RR, Clone: 230089C4) at dilution of 1:800 and Multi-rAb CoraLite® Plus 488-Goat Anti-Rabbit Recombinant Secondary Antibody (H+L) (RGAR002), CL594-phalloidin (red). This data was developed using the same antibody clone with 82888-2-PBS in a different storage buffer formulation.



Biolayer interferometry (BLI) kinetic assays of 82888-2-RR against Human Emerin were performed. The affinity constant is 1.71 nM.