

For Research Use Only

Emerin Recombinant antibody

Catalog Number: 82888-1-RR



Basic Information

Catalog Number: 82888-1-RR	GenBank Accession Number: BC000738	Purification Method: Protein A purification
Size: 1000 ug/ml	GeneID (NCBI): 2010	CloneNo.: 230089B1
Source: Rabbit	UNIPROT ID: P50402	Recommended Dilutions: IHC 1:500-1:2000 IF/ICC 1:500-1:2000
Isotype: IgG	Full Name: emerin	
Immunogen Catalog Number: AG0236	Calculated MW: 34 kDa	

Applications

Tested Applications: IHC, IF/ICC, FC (Intra), ELISA	Positive Controls:
Species Specificity: human	IHC : human stomach cancer tissue, IF/ICC : HeLa cells,

Note-IHC: suggested antigen retrieval with TE buffer pH 9.0; (*) Alternatively, antigen retrieval may be performed with citrate buffer pH 6.0

Background Information

Emerin (Emery-Dreifuss muscular dystrophy) (EMD or EDMD), a serine-rich nuclear membrane protein, is a member of the nuclear lamina-associated protein family. EMD may mediate membrane anchorage to the cytoskeleton by stabilizing and promoting the formation of a nuclear actin cortical network. Defects in EMD gene are the cause of Emery-Dreifuss muscular dystrophy type 1 (EDMD1), a degenerative myopathy characterized by weakness and atrophy of muscle without involvement of the nervous system, early contractures of the elbows Achilles tendons and spine, and cardiomyopathy associated with cardiac conduction defects. EMD inhibits beta-catenin activity by preventing its accumulation in the nucleus and is involved in HIV-1 infection.

Storage

Storage:
Store at -20°C. Stable for one year after shipment.
Storage Buffer:
PBS with 0.02% sodium azide and 50% glycerol pH 7.3.
Aliquoting is unnecessary for -20°C storage

For technical support and original validation data for this product please contact:

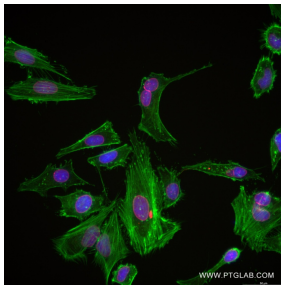
T: 4006900926

E: Proteintech-CN@ptglab.com

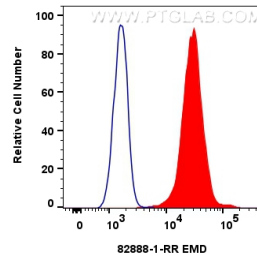
W: ptgcn.com

This product is exclusively available under Proteintech Group brand and is not available to purchase from any other manufacturer.

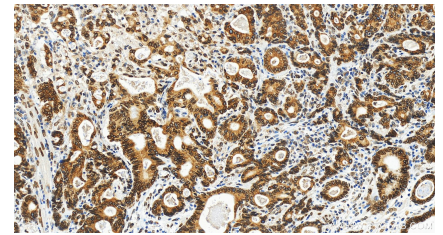
Selected Validation Data



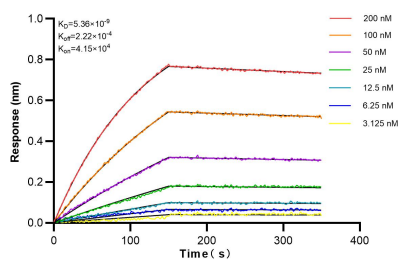
Immunofluorescent analysis of (4% PFA) fixed HeLa cells using Emerin antibody (82888-1-RR, Clone: 230089B1) at dilution of 1:1000 and Multi-rAb CoraLite® Plus 594-Goat Anti-Mouse Recombinant Secondary Antibody (H+L) (RGAM004).(CL488-Phalloidin, green).



1×10^6 HeLa cells were intracellularly stained with 0.25 μ g Emerin Recombinant antibody (82888-1-RR, Clone:230089B1) and CoraLite® 488-Conjugated AffiniPure Goat Anti-Rabbit IgG(H+L) (SA00013-2) (red), or 0.25 μ g Isotype Control (blue). Cells were fixed with 4% PFA and permeabilized with Flow Cytometry Perm Buffer (PF00011-C).



Immunohistochemical analysis of paraffin-embedded human stomach cancer tissue slide using 82888-1-RR (Emerin antibody) at dilution of 1:1000 (under 20 \times lens). Heat mediated antigen retrieval with Tris-EDTA buffer(pH9).



Biolayer interferometry (BLI) kinetic assays of 82888-1-RR against Human Emerin were performed. The affinity constant is 5.36 nM.