

For Research Use Only

SAGE1 Recombinant antibody, PBS Only

Catalog Number: 82876-1-PBS



Basic Information

Catalog Number:

82876-1-PBS

Concentration:

1mg/ml

Source:

Rabbit

Isotype:

IgG

Immunogen Catalog Number:

AG34216

GenBank Accession Number:

NM_018666.2

GeneID (NCBI):

55511

UNIPROT ID:

Q9NXZ1

Full Name:

sarcoma antigen 1

Calculated MW:

99kd

Purification Method:

Protein A purification

CloneNo.:

230094C11

Applications

Tested Applications:

IF/ICC, FC (Intra), Indirect ELISA

Species Specificity:

human

Background Information

Sarcoma antigen 1 (SAGE1) is a cancer/testis antigen that is limited to the spermatogonia and pre-meiotic spermatocytes and localized to the nuclei (PMID: 34465596).

Storage

Storage:

Store at -80°C.

The product is shipped with ice packs. Upon receipt, store it immediately at -80°C

Storage Buffer:

PBS Only

For technical support and original validation data for this product please contact:

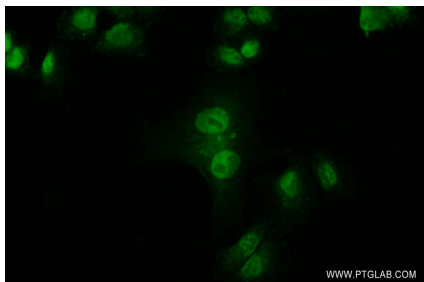
T: 4006900926

E: Proteintech-CN@ptglab.com

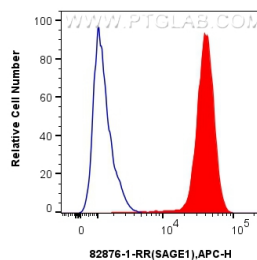
W: ptgcn.com

This product is exclusively available under Proteintech Group brand and is not available to purchase from any other manufacturer.

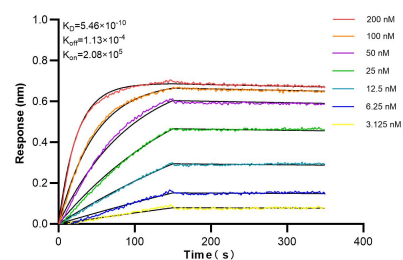
Selected Validation Data



Immunofluorescent analysis of (4% PFA) fixed MDA-MB-453 cells using SAGE1 antibody (82876-1-RR, Clone: 230094C11) at dilution of 1:400 and CoraLite®488-Conjugated AffiniPure Goat Anti-Rabbit IgG(H+L). This data was developed using the same antibody clone with 82876-1-PBS in a different storage buffer formulation.



1×10^6 U2OS cells were intracellularly stained with 0.25 μ g Anti-Human SAGE1 (82876-1-RR, Clone: 230094C11) and APC-Conjugated AffiniPure Goat Anti-Rabbit IgG(H+L) at dilution 1:166 (red), or 0.25 μ g Rabbit IgG control Rabbit PolyAb (30000-O-AP) (blue). Cells were fixed and permeabilized with True-Nuclear Transcription Factor Buffer Set. This data was developed using the same antibody clone with 82876-1-PBS in a different storage buffer formulation.



Biolayer interferometry (BLI) kinetic assays of 82876-1-RR against Human SAGE1 were performed. The affinity constant is 0.546 nM.