

For Research Use Only

# ZO1 Recombinant antibody, PBS Only (Capture)

Catalog Number: 82870-2-PBS



## Basic Information

<b>Catalog Number:</b> 82870-2-PBS	<b>GenBank Accession Number:</b> BC111712	<b>Purification Method:</b> Protein A purification
<b>Size:</b> 1 mg/ml	<b>GeneID (NCBI):</b> 7082	<b>CloneNo.:</b> 240150A1
<b>Source:</b> Rabbit	<b>UNIPROT ID:</b> Q07157	
<b>Isotype:</b> IgG	<b>Full Name:</b> tight junction protein 1 (zona occludens 1)	
<b>Immunogen Catalog Number:</b> AG33182	<b>Calculated MW:</b> 1748 aa, 195 kDa	

## Applications

**Tested Applications:**  
Cytometric bead array, Sandwich ELISA, Indirect ELISA, Sample test

**Species Specificity:**  
human

## Background Information

### Storage

**Storage:**  
Store at -80°C.  
**The product is shipped with ice packs. Upon receipt, store it immediately at -80°C**

**Storage Buffer:**  
PBS Only

For technical support and original validation data for this product please contact:

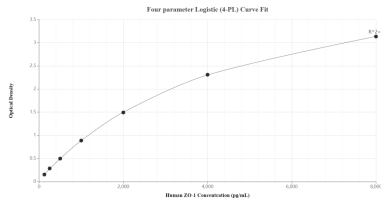
T: 4006900926

E: [Proteintech-CN@ptglab.com](mailto:Proteintech-CN@ptglab.com)

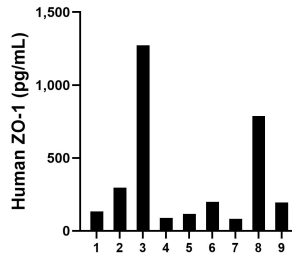
W: [ptgcn.com](http://ptgcn.com)

**This product is exclusively available under Proteintech Group brand and is not available to purchase from any other manufacturer.**

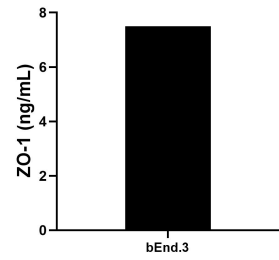
## Selected Validation Data



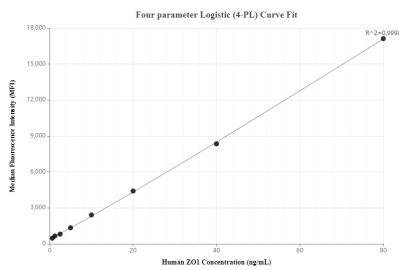
Sandwich ELISA standard curve of MP00349-4, Human ZO-1 Recombinant Matched Antibody Pair- PBS only. 82870-2-PBS was coated to a plate as the capture antibody and incubated with serial dilutions of standard Ag33182. 82870-9-PBS was HRP conjugated as the detection antibody. Range: 125-8000 pg/mL



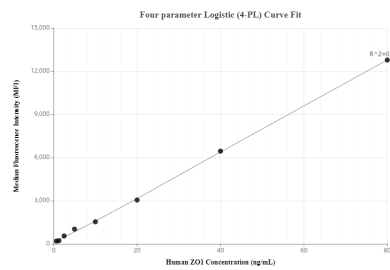
Serum of nine individual healthy human donors was measured. The ZO-1 concentration of detected samples was determined to be 352.4 pg/mL with a range of 83.4 - 1,272.8 pg/mL.



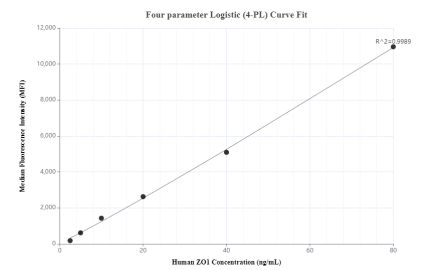
The mean ZO-1 concentration was determined to be 7.5 ng/mL in bEnd.3 cell extract based on a 1.8 mg/mL extract load.



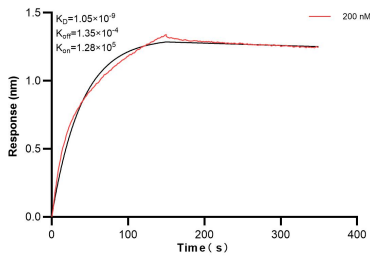
Cytometric bead array standard curve of MP00349-1, ZO-1 Recombinant Matched Antibody Pair, PBS Only. Capture antibody: 82870-2-PBS. Detection antibody: 82870-5-PBS. Standard: Ag33182. Range: 0.625-80 ng/mL



Cytometric bead array standard curve of MP00349-2, ZO-1 Recombinant Matched Antibody Pair, PBS Only. Capture antibody: 82870-2-PBS. Detection antibody: 82870-3-PBS. Standard: Ag33182. Range: 0.625-80 ng/mL



Cytometric bead array standard curve of MP00349-3, ZO-1 Recombinant Matched Antibody Pair, PBS Only. Capture antibody: 82870-2-PBS. Detection antibody: 82870-4-PBS. Standard: Ag33182. Range: 2.5-80 ng/mL



Biolayer interferometry (BLI) kinetic assay of 82870-2-PBS against Human ZO1 was performed. The affinity constant is 1.05 nM.