

For Research Use Only

ZO-1 Recombinant antibody

Catalog Number: 82870-1-RR



Basic Information

Catalog Number:

82870-1-RR

Size:

1000 µg/ml

Source:

Rabbit

Isotype:

IgG

Immunogen Catalog Number:

AG33182

GenBank Accession Number:

BC111712

GeneID (NCBI):

7082

UNIPROT ID:

Q07157

Full Name:

tight junction protein 1 (zona occludens 1)

Calculated MW:

1748 aa, 195 kDa

Observed MW:

230 kDa

Purification Method:

Protein A purification

CloneNo.:

2P13

Recommended Dilutions:

WB 1:2000-1:10000

IP 0.5-4.0 µg for 1.0-3.0 mg of total protein lysate

IF 1:750-1:3000

Applications

Tested Applications:

IF/ICC, IP, WB, ELISA

Species Specificity:

Human

Positive Controls:

WB : Caco-2 cells, MCF-7 cells, HeLa cells, HepG2 cells

IP : HEK-293 cells,

IF : MCF-7 cells,

Background Information

Tight junction (or zonula occludens) form the continuous intercellular barrier between epithelial and endothelial cells, which is required to separate tissue spaces and regulate selective movement of solutes across the epithelium and endothelium (PMID: 20066090). ZO-1 (also known as TJP1) is a peripheral membrane phosphoprotein located on the cytoplasmic face and is expressed in tight junctions of both epithelial and endothelial cells (PMID: 3528172). It binds the transmembrane proteins occludin and the claudins linking them to cytoskeletal actin (PMID: 17418867). ZO-1 belongs to a family of multidomain proteins known as the membrane-associated guanylate kinase homologs (MAGUKs). It is a pivotal tight junction protein and may be involved in signaling mechanisms regulating cell proliferation and differentiation (PMID: 22782886).

Storage

Storage:

Store at -20°C. Stable for one year after shipment.

Storage Buffer:

PBS with 0.02% sodium azide and 50% glycerol pH 7.3.

Aliquoting is unnecessary for -20°C storage

For technical support and original validation data for this product please contact:

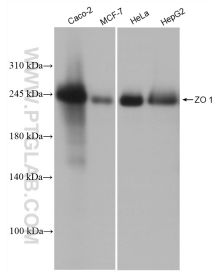
T: 4006900926

E: Proteintech-CN@ptglab.com

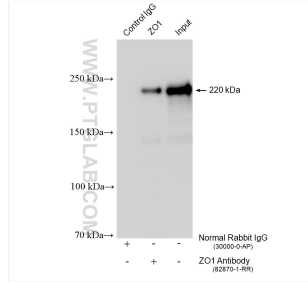
W: ptgcn.com

This product is exclusively available under Proteintech Group brand and is not available to purchase from any other manufacturer.

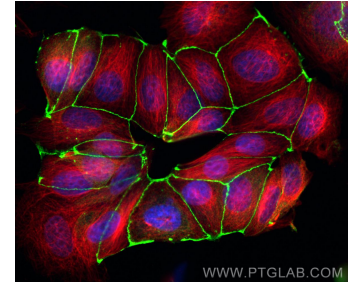
Selected Validation Data



Various lysates were subjected to SDS PAGE followed by western blot with 82870-1-RR (ZO-1 antibody) at dilution of 1:5000 incubated at room temperature for 1.5 hours.



IP result of anti-ZO-1 (IP:82870-1-RR, 4ug; Detection:82870-1-RR 1:2000) with HEK-293 cells lysate 920 ug.



Immunofluorescent analysis of (4% PFA) fixed MCF-7 cells using ZO-1 antibody (82870-1-RR, Clone: 2P13) at dilution of 1:1500 and CoraLite®488-Conjugated AffiniPure Goat Anti-Rabbit IgG(H+L), Alpha Tubulin antibody (66031-1-Ig, Clone: 1E4C11, red).