

For Research Use Only

Di-Methyl-Histone H4 (Arg3) Recombinant antibody

Catalog Number: 82859-1-RR



Basic Information

Catalog Number:

82859-1-RR

Concentration:

800 ug/ml

Source:

Rabbit

Isotype:

IgG

GenBank Accession Number:

BC069654

GeneID (NCBI):

8359

UNIPROT ID:

P62805

Full Name:

histone cluster 1, H4a

Observed MW:

13 kDa

Purification Method:

Protein A purification

CloneNo.:

1E21

Recommended Dilutions:

WB 1:2000-1:16000

Applications

Tested Applications:

WB, Dot Blot, ELISA

Species Specificity:

human, mouse, rat

Positive Controls:

WB : THP-1 cells, mouse liver tissue, NIH/3T3 cells,
HSC-T6 cells

Background Information

Storage

Storage:

Store at -20°C. Stable for one year after shipment.

Storage Buffer:

PBS with 0.02% sodium azide and 50% glycerol pH 7.3.

Aliquoting is unnecessary for -20°C storage

For technical support and original validation data for this product please contact:

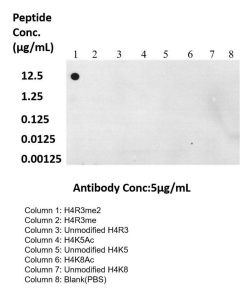
T: 4006900926

E: Proteintech-CN@ptglab.com

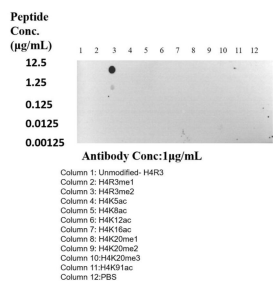
W: ptgcn.com

This product is exclusively available under Proteintech Group brand and is not available to purchase from any other manufacturer.

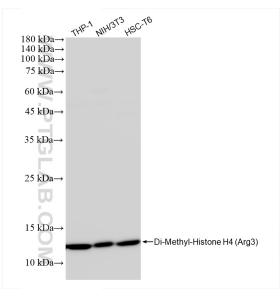
Selected Validation Data



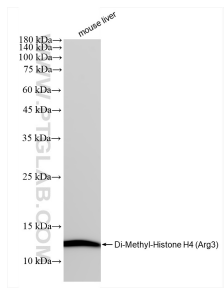
Dot blot analysis was used to confirm the specificity of 82859-1-RR Di-Methyl-Histone H4 (Arg3) antibody. Peptides were spotted onto NC and probed with antibody at 5 µg/mL. The amount of peptide (ug/mL) spotted is indicated next to each row.



Dot blot analysis was used to confirm the specificity of 82859-1-RR Di-Methyl-Histone H4 (Arg3) antibody. Peptides were spotted onto NC and probed with antibody at 1 µg/mL. The amount of peptide (ug/mL) spotted is indicated next to each row.



Various lysates were subjected to SDS PAGE followed by western blot with 82859-1-RR (Di-Methyl-Histone H4 (Arg3) antibody) at dilution of 1:8000 incubated at room temperature for 1.5 hours.



mouse liver tissue were subjected to SDS PAGE followed by western blot with 82859-1-RR (Di-Methyl-Histone H4 (Arg3) antibody) at dilution of 1:8000 incubated at room temperature for 1.5 hours.